



**QUALITY ASSURANCE . VALUE CREATION**

**中國建築股份有限公司**

CHINA STATE CONSTRUCTION ENGRG . CORP. LTD



中國建築

## The Group

**CSCEC — The largest construction & real estate conglomerate**

**中国建筑 — 全球最大建筑地产企业集团**



**NO. 23 of the Global Fortune 500 Enterprises in 2018**  
**世界 500 强排名第 23 名**



**NO. 1 of the ENR Top 250 Global Contractors for 5 consecutive years**

**NO. 3 of World Most Valued Brand**



**Got rating "A" with a Stable Outlook by Standard & Poor, Moody and Fitch Ratings , highest in the Engineering & Construction Business.**

**获得标普A、穆迪A2、惠誉A 信用评级，为行业内全球最高**



# CSCEC achieved the highest credit rating within global construction industry

## 中建股份获得全球建筑业界最高的信用评级



中國建築

### Construction Companies in China

Company	Credit Ratings (Moody's/S&P/Fitch)
China State Construction	A2/A/A
China Communication Construction	A3/A-/NR
Power Construction Corporation of China	A3/A-/A-
China Railway Group	NR/BBB+/BBB+
Shanghai Construction Group	Baa1/BBB/BBB
China Metallurgical Group Corp.	Baa3/BBB-/NR

### Construction Companies in the World

Company	Country	Credit Ratings (Moody's/S&P/Fitch)
China State Construction	China	A2/A/A
Flour Corporation	U.S.	A3/A-/A-
Vinci	France	Baa1/A-/BBB+
PPG Industries	U.S.	Baa1/A-/A-
Bouygues	France	Baa1/BBB/NR
NVR	U.S.	Baa2/BBB+/BBB+
Downer EDI	Australia	NR/NR/BBB
Ferrovial	Spain	NR/BBB/BBB
CIMIC Group	Australia	Baa3/BBB-/NR
Strabag	Austria	NR/BBB+/NR
Technip	France	NR/BBB+/NR
Saipem	Italy	Baa3/BBB-/NR
POSCO E&C	Korea	Baa3/BBB-/NR
Amec Foster Wheeler	UK	Baa3/BBB-/NR
Odebrecht Engenharia e Construção	Brazil	Baa3/BBB-/BBB-
Taylor Wimpey	UK	Ba1/BBB-/BBB-



Source: Moody's, Standard & Poor's, Fitch

## Buildings

全品类的房屋建筑

- Highrise / 超高层
- Public facility / 公共建筑
- Commercial / 商业地产
- Office / 办公物业
- Residence / 住宅
- Hotel & Resort / 酒店和文旅
- .....



## Design & Engineering

工程勘察设计

- Feasibility Study / 项目可研
- Design / 工程设计
- Site Survey / 勘察
- Engineering & Shop Drawing / 深化设计
- .....



## Industrial Facilities

工业设施

- Plant & Factory / 工业厂房
- Petrochemical Facility / 石化工业设施
- Power Facility / 能源电力设施
- Military Defence / 国防工业
- .....



## Infrastructure

基础设施

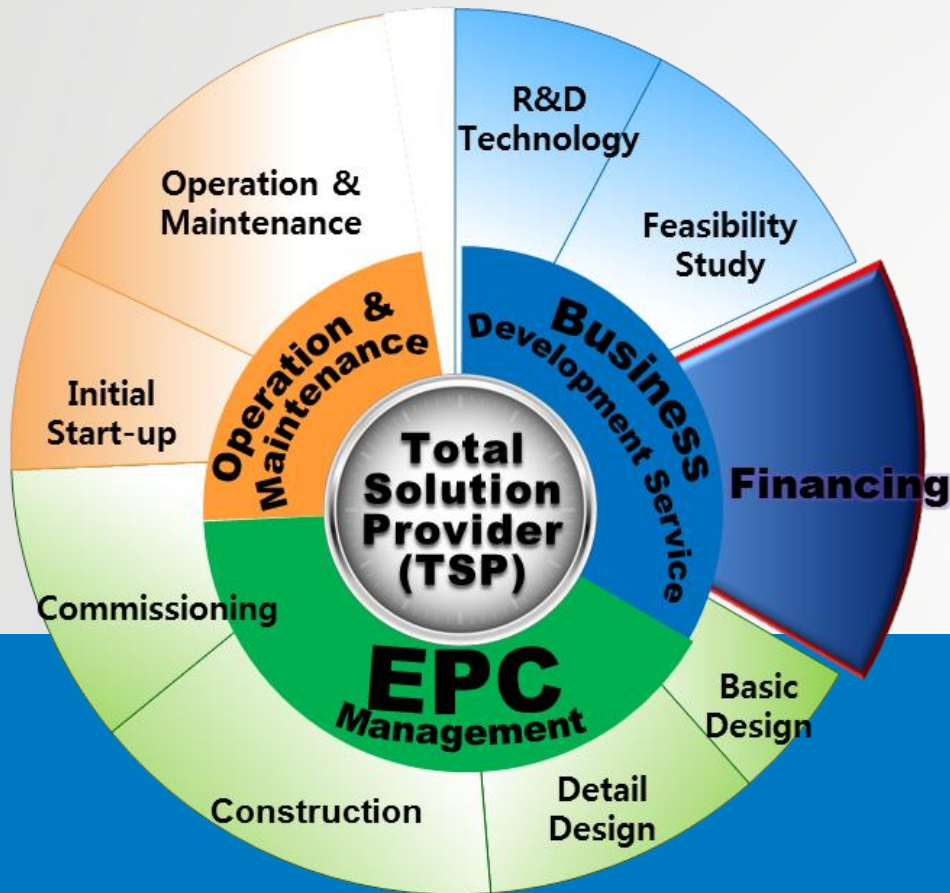
- Airport / 机场
- Road & Bridge / 公路和桥梁
- Rail & Metro / 铁路和城市轨道交通
- Ports / 港工
- Water & Utility / 水务和市政管廊
- .....



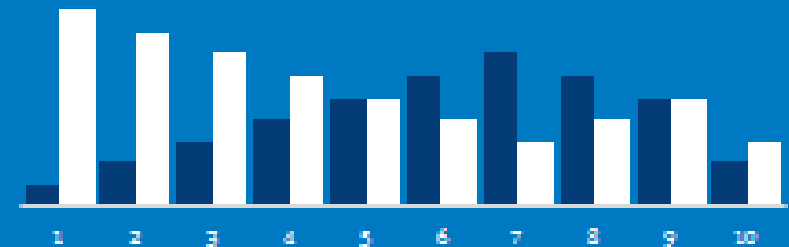


## 全项目周期 F+ EPC 工程总承包服务

### 工程建设投融资 / Investment & Financing



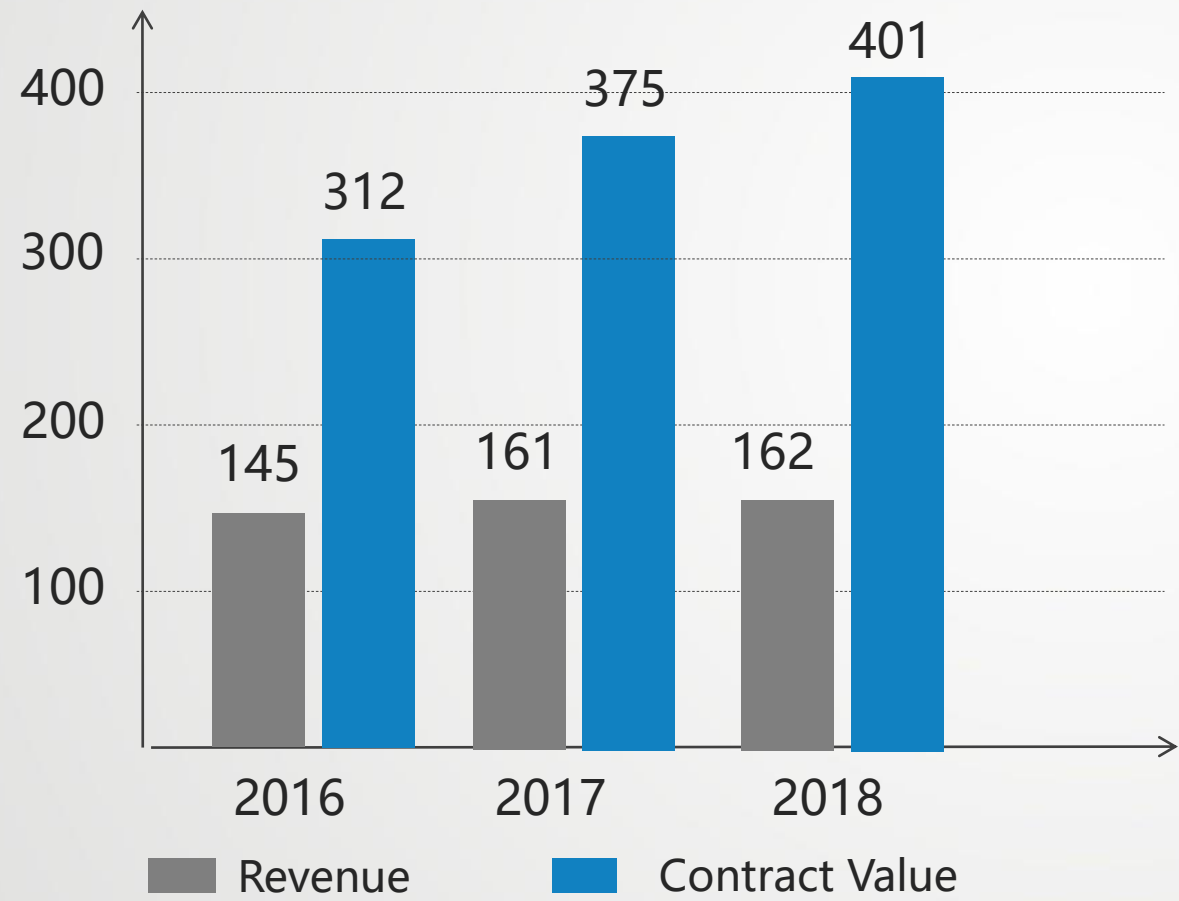
- PPP / BT / BOT | 公私合营业务
- Concession | 政府特许经营业务
- Equity Investment | 资本金投资
- Financing Assistant Service | 协助融资
- Credit Enhancement | 项目增信





## Revenue & Contract Value

Unit: Billion USD



Year	Contract Value	Revenue
2016	312	145
2017	375	161
2018	401	162

## Human Resources

TOTAL EMPLOYEES 270,467

270,467 名全球雇员



我们的  
团队

- **9,328** Registered Builders
- **2,897** Chartered Quantity Surveyors
- **2,249** Registered Architects & Structural & MEP Engineers
- **13,364** Senior Engineers
- **922** Professorate Senior Engineers
- **119** CIOB Members
- **10** Academicians of the Chinese Academy of Engineering and China Engineering Survey and Design Masters
- **9,328** 名注册建造师
- **2,897** 名注册造价工程师
- **2,249** 名注册建筑师、结构师、设备工程师
- **13,364** 名高级工程师
- **922** 名教授级高级工程师
- **119** 名英国皇家特许建造师会员
- **10** 名院士及中国勘察设计大师



## Domestic

- State Quality Excellency Award
- **307** Lu Ban Prizes / State Top Quality Awards for Construction Projects
- **71** Chinese National Science and Technology Awards
- .....

**66**  
YEARS OF  
EXCELLENCE  
SERVICES

1952 - 2018



## International

- State Level / President Award in 5 Countries
- IMPA Excellency Award
- Singapore BCA Construction Excellence Award
- U.A.E Sheikh Khalifa Excellence Award (SKEA)
- .....

## IPMA AWARDS 2016



JOIN THE WINNERS CLUB 2017

### Finalists in Mega-Sized Projects Category 2016



Medupi (South Africa) by GE Steam Power Systems, South Africa



Vindhyachal Super Thermal Power Station, Stage-V (India) by NTPC Ltd, India.



Sir Seewoosagur Ramgoolam International Airport Expansion Project, Mauritius (Mauritius) by China State Construction Engineering Corporation Ltd, China.



# 服务跨越五洲 Build All over The World



中國建築



# Featured Projects



## 中建·项目业绩

30年来，中国建筑先后在全球129个海外国家和地区承建了6000多项工程，在美国、欧洲、澳洲、中东、东南亚和非洲提供高品质的建筑产品和服务。

We focus on providing high quality engineering & construction service in United States, Europe, Oceania, Middle East, Southeast Asia and Africa. More than 6000 projects have been successfully handed over from us in the international market.

PART

1

# 超高层建筑 SKYSCRAPERS

50%

全球50%的在建超高层建筑正由中建建造  
*of the ongoing super high rise building  
of the world is emerging from CSCEC's hands right now*

80%

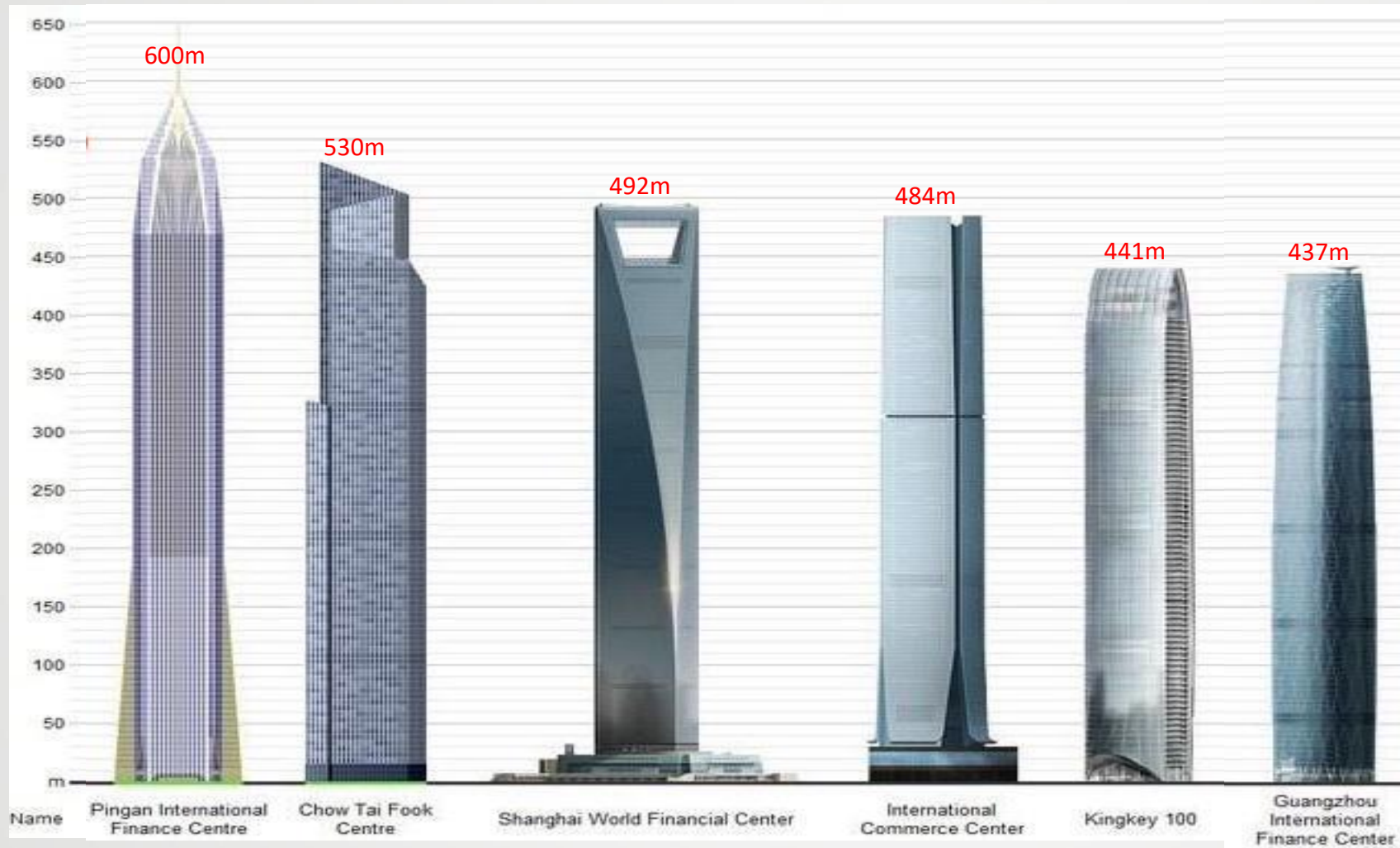
中国80%已投入使用的超高层建筑由中建建造  
*of the super high rise building of China is built by CSCEC*



中國建築

*We have successfully Delivered .....*

(Over 400m)



- ◆ 上海环球金融中心
- ◆ 香港寰球贸易广场大厦
- ◆ 深圳京基100大厦
- ◆ 广州国际金融中心（广州西塔）
- ◆ 广州周大福大厦（广州东塔）
- ◆ 深圳平安金融中心



## Under Construction (Over 400 M)

570m



Tianjin  
Goldin 117

530m



Tianjin  
Chow Tai Fook  
Center

520m



Beijing  
Z15 Tower

472m



Wuhan  
Greenland

452m



Signature Tower,  
Malaysia

中建在建的部分建筑高度超过400米的超高层建筑：

- ◆ 武汉绿地中心
- ◆ 天津高银二六大厦
- ◆ 天津周大福中心
- ◆ 北京中国尊
- ◆ 马来西亚标志塔
- ◆ ...

*And More to Deliver .....*



# PART 2

## 大规模群体建筑 GROUP BUILDINGS & MIXED DEVELOPMENT

在城市化的伟大进程里，我们是建造者，  
让生活和工作空间更加美好 .....

We are the builder, for the great course of urbanization  
make your surrounding a Better place .....



中國建築





**Jumeirah Beach Villas, Dubai, UAE**

**迪拜棕榈岛别墅项目**



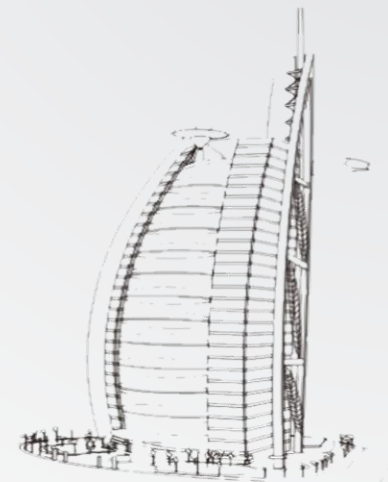
# PART 3

## 酒店和奢华建筑 HOTEL & LUXURY RESORT

中建建造的星级酒店涵盖了世界所有知名品牌

Hilton, Hyatt, Intercontinental, Marriott, Best Western, CENDANT,  
Kempinski, Starwood, ACCOR, Shangri-la, Peninsula.....

They all managing the luxury buildings we built



中國建築



## 韩国济州岛梦想大厦

Dream Tower , Cheju, South Korea

GFA :302,777 m<sup>2</sup> / No. of Floors: 38 F

776+ 850 Rooms



上海迪士尼乐园 主入口 米奇大街区域和两个主题乐园

Shanghai Disney Land - Main Entrance Zone ,  
Mickey Street Zone & Two Theme Zone



Sanya Phoenix Island Luxury Hotel &

Service Apartment

三亚凤凰岛度假酒店和服务公寓



## 巴哈马度假村项目

Baha Mar Resort  
Nassau, The Bahamas

GFA: : 320,000 m<sup>2</sup>



MGM-Cotai-Resort,  
Macau

澳门美高梅氹仔酒店  
GFA: 200,000 m<sup>2</sup>

Intercontinental Sheshan

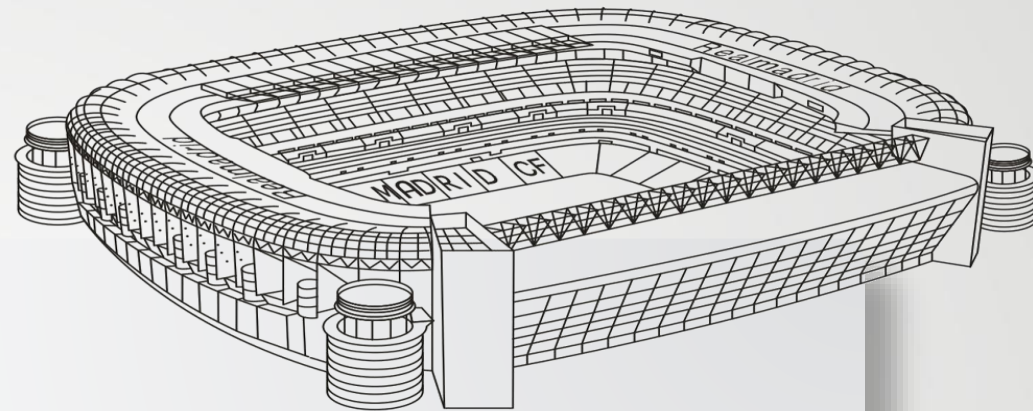
Shanghai Deep Pit Resort Hotel 上海佘山世茂深坑洲际酒店





# PART 4

## 体育场馆 SPORTS FACILITIES



*CSCEC is the Major Construction Contractor of*

- 2008 Olympic Games at Beijing
- 2010 Asian Games at Guangzhou
- 2015 The All-Africa Games at The Republic of Congo
- 2014 Youth Olympic Games at Nanjing
- 2011 The 26th Summer Universiade at Shenzhen
- CARIFTA Games
- National Games of the People's Republic of China
- .....

- 2008 北京奥运会
- 2010 广州亚运会
- 2015 刚果全非运动会
- 2014 南京青奥会
- 2011 深圳大运会
- 加勒比区域运动会
- 多届全运会、城运会



中國建築





## 深圳宝安体育场

**Bao'an Stadium & Training Center, Shenzhen ,China**

*Capacity: 40,000 Seats*

*GFA: 97700m<sup>2</sup>*

*Cable-Membrane Roofing System*



## 深圳龙岗大运会体育中心

**Shenzhen Universiade Stadium,  
Shenzhen China**

*The 26th World Summer Universiade, 2011*

*Capacity: 60,000 Seats    GFA: 139,600m<sup>2</sup>*



## 埃塞俄比亚国家体育场

**National Stadium . Ethiopia**

*Capacity: 60,000 Seats    GFA: 95000 M<sup>2</sup>*



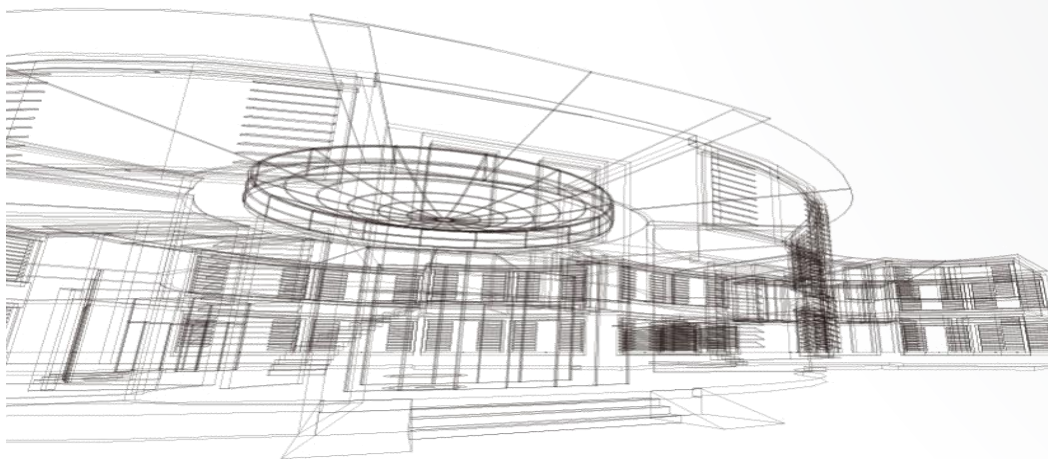
## 国家游泳中心（水立方）

**China National Aquatics Centre**

*( 2008 Olympic Stadium )*

PART 5

会议、展览中心和影剧院  
CONVENTION / EXHIBITION  
/ THEATER & OPERA



中國建築





**珠海歌剧院**  
Zhuhai Opera House, Guangdong,  
China



**老挝万象东盟会议中心（境外鲁班奖）**  
**跨越雨季9个月工期完成，荣获老挝国家勋章**



**Laos State Conference Center, Vientiane, Laos**

*Award Laos National Honor Medal*

*Built within 9 months include monsoon season, regard as “mission impossible completed”*



## 2010年上海世博会国家馆 .部分中建作品

2010 Shanghai EXPO . China



France Pavilion (法国)



Mexico Pavilion (墨西哥)



Canada Pavilion (加拿大)



Spain Pavilion (西班牙)



Morocco Pavilion (摩洛哥)



Thailand Pavilion (泰国)

# PART 6

## 文化与宗教建筑 CULTURAL & RELIGIOUS

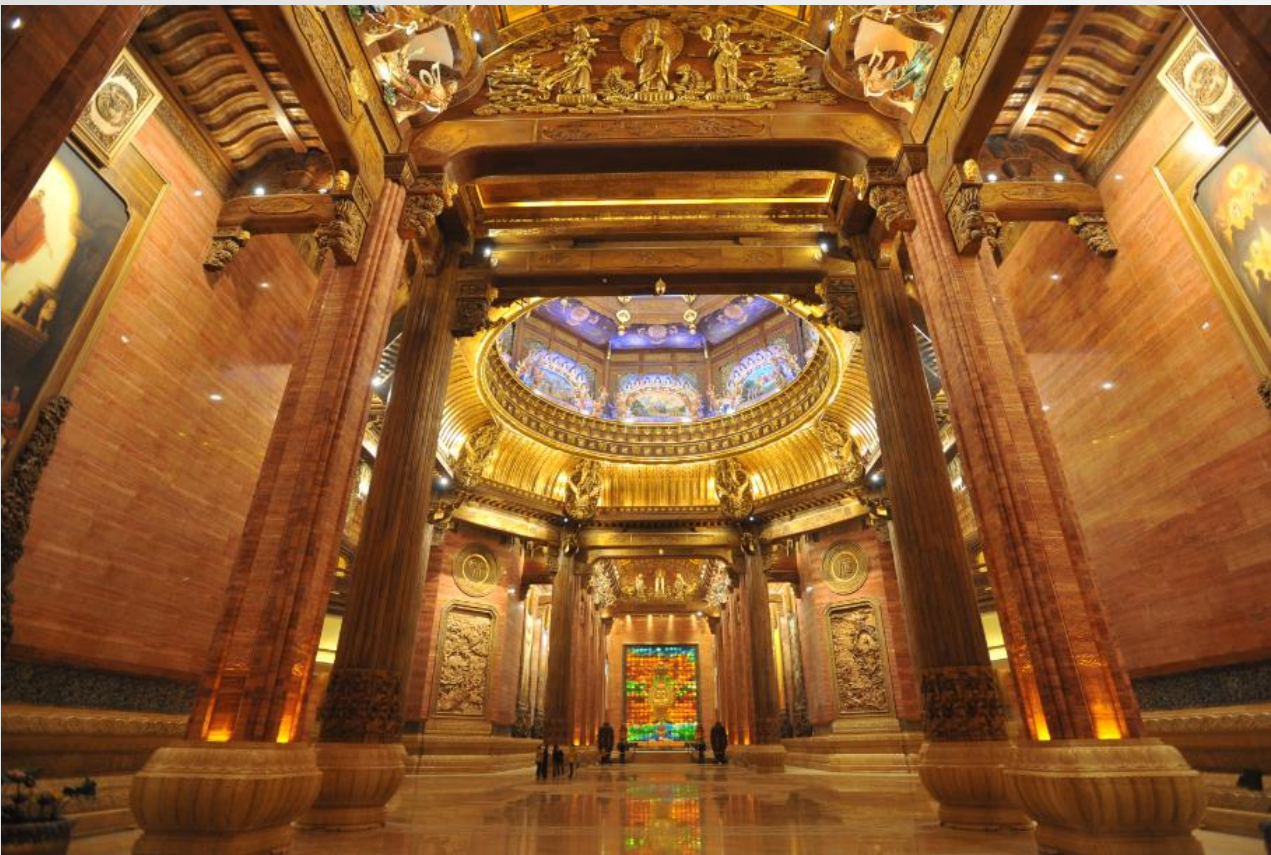


我们以谦逊之心、巧匠之手，建造心灵的寄托  
We build the rest place of soul  
with humble heart and skillful hands



中國建築





## 灵山梵宫 无锡 美轮美奂的室内装潢工艺

Lingshan Buddhist temple ,Wuxi, China —— Interior



## 阿尔及利亚伽玛大清真寺

**The Grand Mosque of Gama'a Al-Jadid , Algeria**

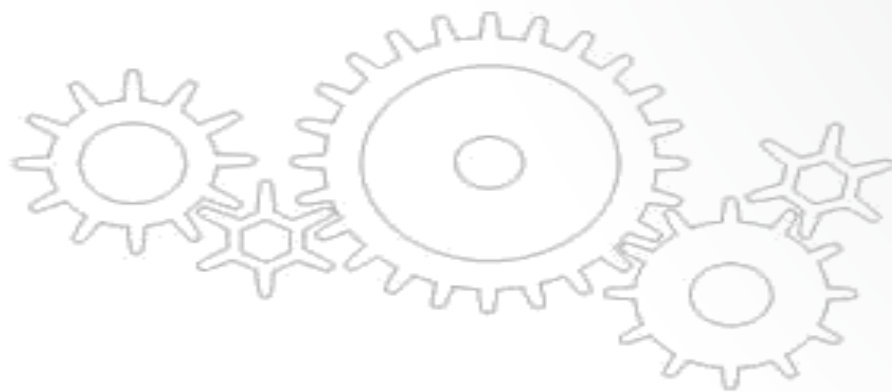
非洲最大，世界第三大清真寺， 全球最高礼拜塔

*The biggest mosque in Africa and third largest in the world  
Highest minaret in the world.*

PART 7

# 工业与国防

## MANUFACTURING FACILITIES & MILITARY



中國建築





相关施工技术荣获国家科技进步一等奖。为建国后建筑施工行业内首次斩获此国家殊荣



酒泉卫星发射中心 .中国载人航天设施 Satellite Launch Center, Jiuquan, China



海南卫星发射中心  
Satellite Launch Center, Hainan, China



北京松下彩色显像管工厂  
Panasonic Color-Kinescope Factory, Beijing, China

PART 8

教育与卫生  
EDUCATIONAL & HEALTH  
FACILITIES



中國建築





## 新加坡共和理工学院

Singapore Republic Polytechnic ,Singapore



## 阿尔及利亚康斯坦丁大学城

Constantine University City, Constantine, Algeria



建设有(P4)四级生物安全实验室 We built Chinese P4 Bio-Lab

## 中国国家疾控中心 . 北京

National Center for Disease Control and Prevention, Beijing



## 拉斯海马-哈里发医院 . 阿联酋

Khalifa Hospital,  
Ras Al Khaimah, UAE

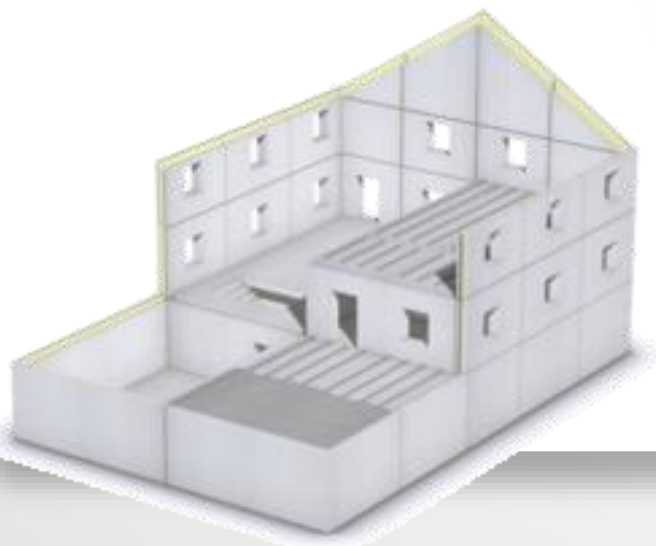
项目荣获“2014年度阿联酋建筑奖最杰出的社会类建设项目”，获得最高分数，并已成为公共事务管理部样板工程

"Khalifa Hospital," won the "2014 Annual Social class most outstanding construction projects UAE Architecture Award", and obtain the highest score ever, has become the model project of Ministry of Public Work



PART 9

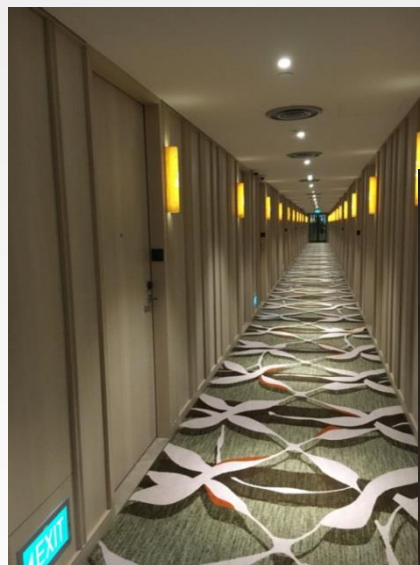
# 建筑预制工业 PRECAST & PREFABRICATED BUILDING



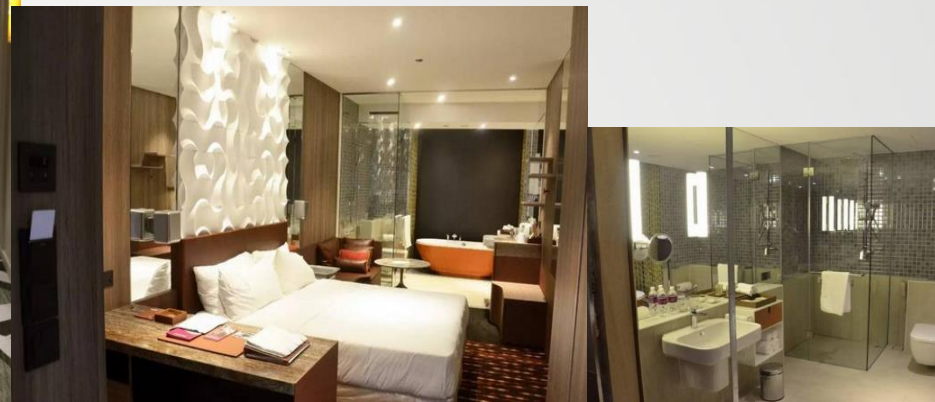
中國建築



**PRECAST BUILDING FACTORY OF CSCEC**



**Singapore & Australia Approved Building Product**



**Module Building System**



**Steel Structure Factory of CSCEC  
with annual capacity of 1,000,000 Tone**

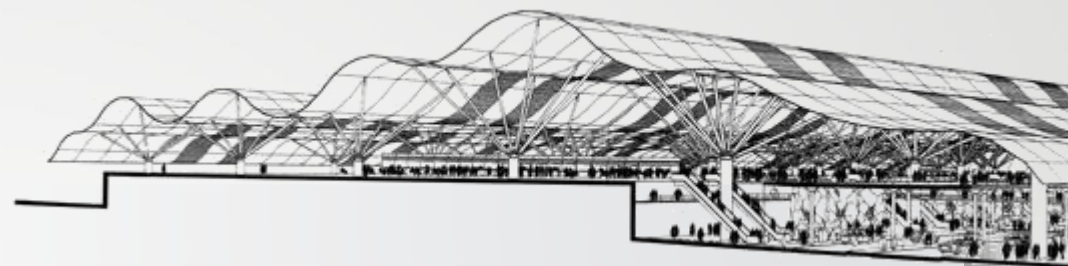




PART

# 10

## 机 场 AVIATION



50 years in Airport Construction Business

CSCEC Build 35 Airport all over the world

22 out of 38 major air traffic hub in China was built by CSCEC

8 State Gateway Airport was built by CSCEC



中國建築



### SSR国际机场 . 毛里求斯 ( 境外鲁班奖工程 )

#### SSR International Airport EPC Project , Mauritius

Apron 350,000m<sup>2</sup> Terminal GFA: 56,000m<sup>2</sup> ICAO 4F

Engineer: Louis Berger Architect : ADPi

- Xinqiao International Airport, Hefei, China | 113,000m<sup>2</sup>
- Longdongbao Airport, Guiyang, China | 110,000 m<sup>2</sup>
- Dalian International Airport, Dalian, China | 135,000 m<sup>2</sup>
- Wenzhou International Airport, Wenzhou, China | 102,000 m<sup>2</sup>
- Meilan International Airport, Haikou, China | 62,000m<sup>2</sup>

More .....



### 北京大兴国际机场

#### Beijing Daxing International Airport



### 北京. 首都国际机场 T3 航站楼

#### International Airport Terminal 3, Beijing, China

GFA: 400,000 m<sup>2</sup> Architect : Foster & Partners ICAO 4F



PART

11

# 道路和桥梁 ROADS & BRIDGES



中國建築

## 刚果（布）国家 1 号公路 / National No.1 Road, Congo Rep.



总里程 Length: 591km

项目分两期建设，一期从黑角（Point-Noire）到多利吉（Dolisie）173KM，二期从多利吉（Dolisie）到布拉采维尔（Brazzville）418KM。

The Project is developed by two phases, with phase 1 extending from Point-Noire to Dolisie (173km) and phase 2 extending from Dolisie to Brazzville (418km).



淡布隆大桥CC4标段.文莱

Temburong Brunei Bay  
Bridge CC4 , Brunei

Total Length: 11.8 KM

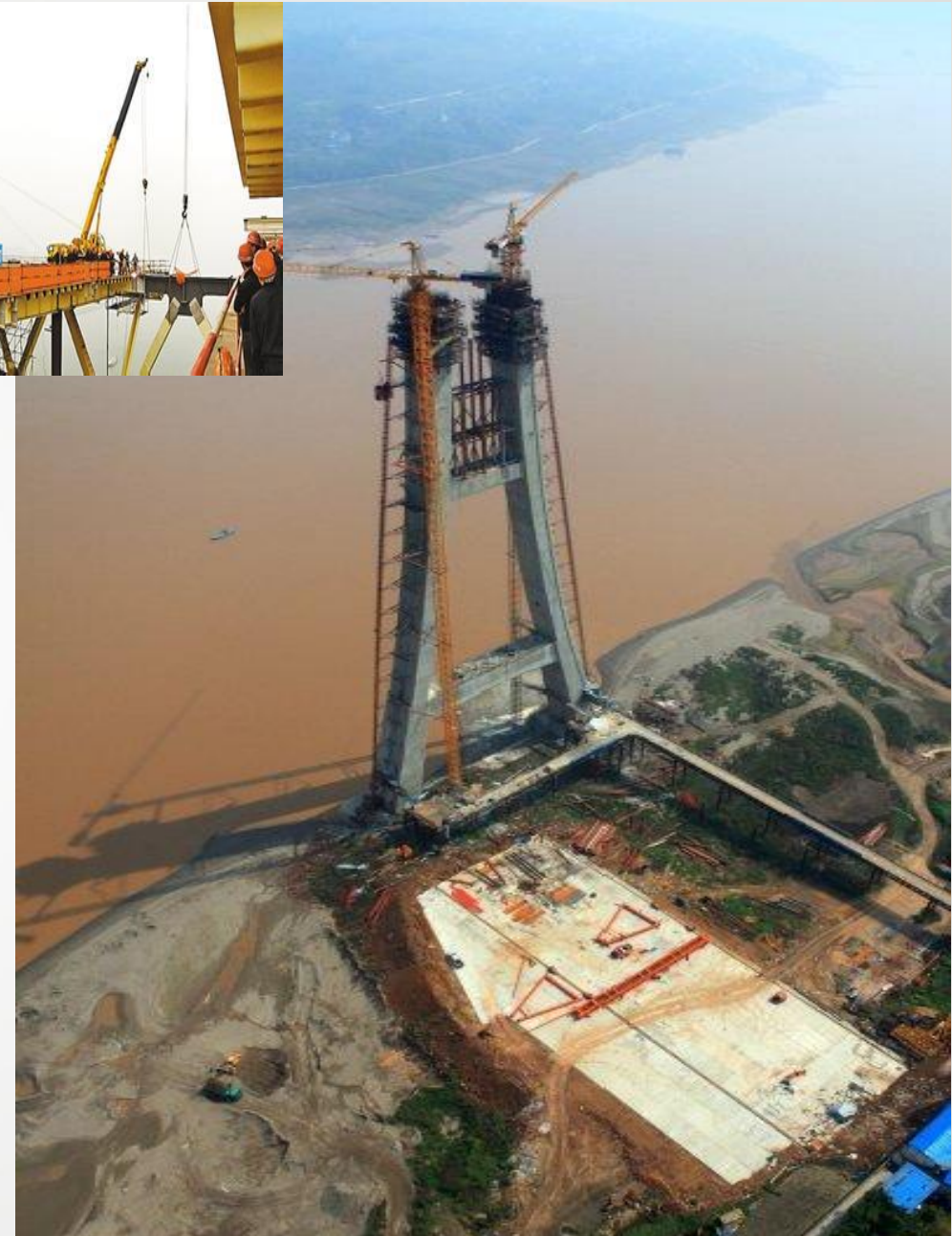


迪拜酋长路项目

Emirates chieftain Road Project, Dubai.

33km, 2Nrs Inter-Change Bridges; 256 M USD;  
2008/07-2013/03





公路铁路两用桥 双层桥面 桥面长度：6.07公里

主跨：216.5+464+216.5 M

Double Deck Motor/Train Bridge Total Length:6.07KM

Main Span：216.5+464+216.5 M

**重庆粉房湾大桥**

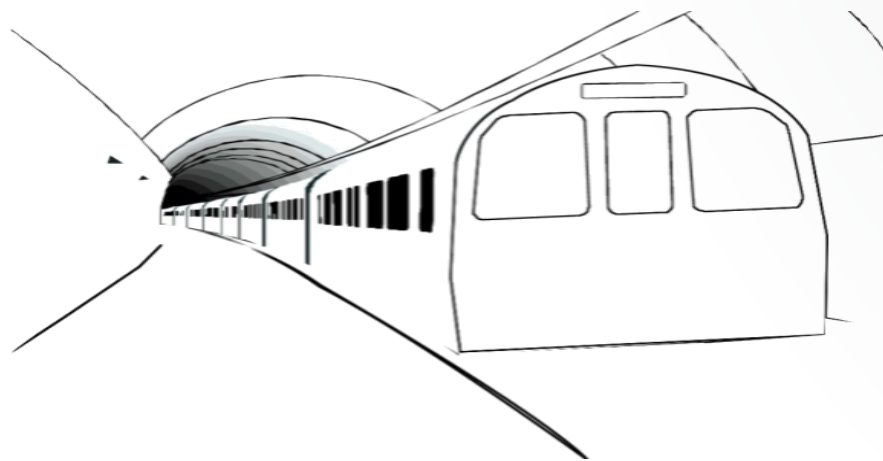
**Fenfangwan Bridge, Chongqing, China**



PART

12

# 铁路和城市轨道交通 RAIL & METRO



中國建築

# 哈尔滨——大连客运专线

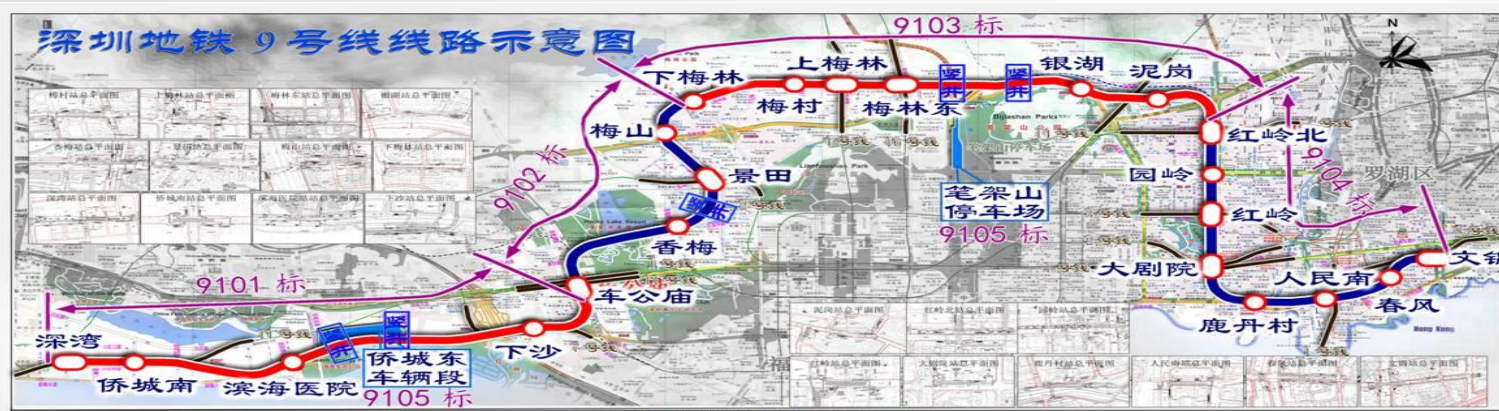
建设里程 · 163KM  
运营时速 · 300KM/H



Harbin-Dalian High-Speed Railway      163 KM      Operation Speed 300KM/H  
Each box-beam of the elevated railway is weight more than 900 T      (2007 /09 – 2012 /12)

## 深圳地铁 9号线

Subway Line 9 Project . Shenzhen . China



- TBM Tunnel 25.35 KM
- 22 Underground Station
- EPC Contracting
- Construction Period :
  - 2012.7 – 2016.12



# 中建参与建设多条铁路 总里程突破 1000KM

Major Railway Project CSCEC Participated . We built more than 1000 KM and keep moving on



- Zhengzhou – Xuzhou High Speed Rail
- Wuhan-Xiaogan Intercity Shuttle Rail
- Lanzhou– Baoji High Speed Railway
- Shenyang- Dandong High Speed Railway
- Chengdu- Chongqing High Speed Railway
- Hefei – Bengbu High Speed Railway
- Beijing- Shijiazhuang High Speed Railway
- Nanning– Guangzhou High Speed Railway
- Taiyuan- Zhongwei - Yinchuan Railway
- .....

郑徐客专

汉孝城际

兰宝双线

沈丹客专

成渝高铁

合埠高铁

京石客专

南广客专

太中银线

.....



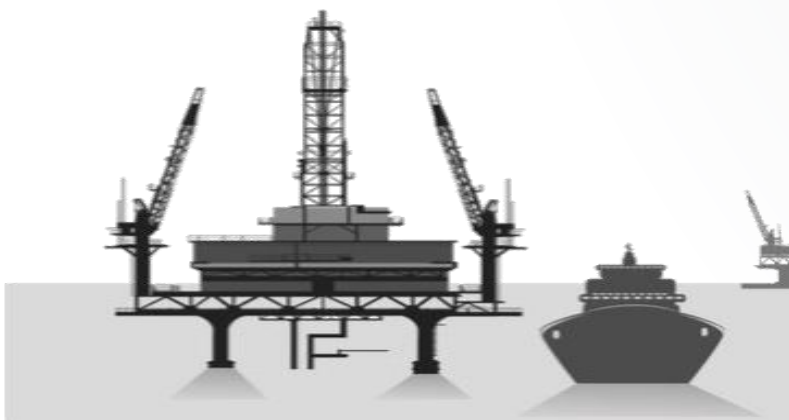


PART

13

# 港工和填海

## PORT & LAND RECLAMATION



中國建築



## 日照 岚山港

石化和液体化工码头

矿石码头

通用泊位码头

散货码头



**Lanshan Port, Rizhao, Shandong, China**

Petro-Chem Terminal / Ore Terminal / Universal Terminal / Bulk Terminal



## 香港竹篙湾1、2期（迪斯尼）填海项目

**Penny's Bay Development, Contract 1&2 (Disney Land), Hong Kong**

- 填海250公顷
- Reclamation of 250 hectares;
- 7315m 海堤工程
- 7315 m of Jetty;
- 疏浚820万立方米
- Dredging & Train 8.2 million m<sup>3</sup>;
- 20公里的道路及桥梁
- 20km road work & bridges;
- 250公顷的地基处理
- 250 hectares of foundation treatment;
- 2001.10-2006.1

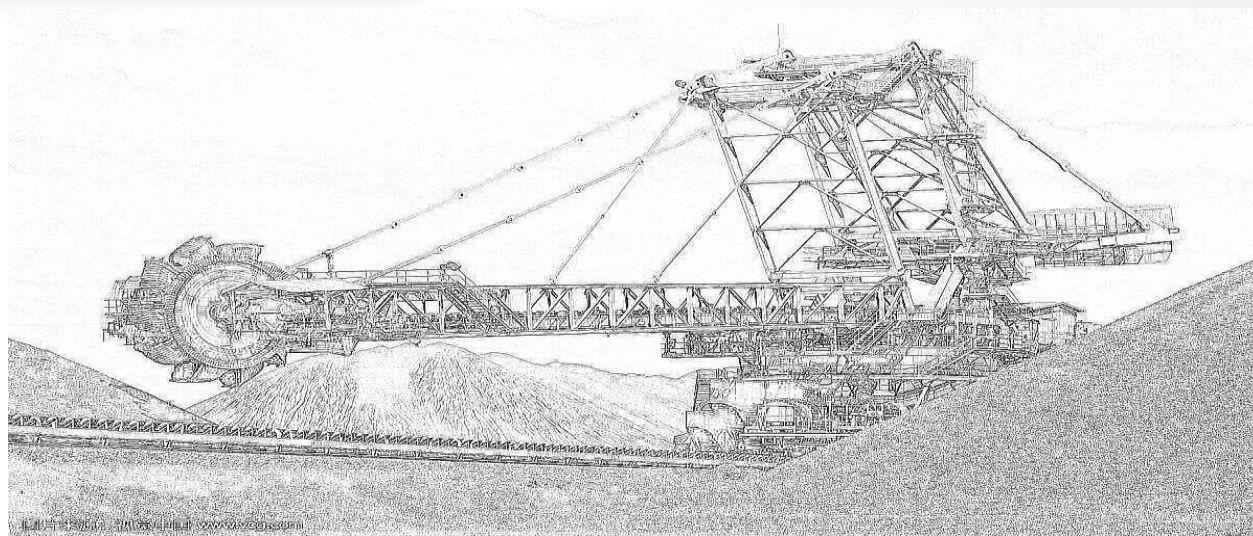


PART

14

矿业

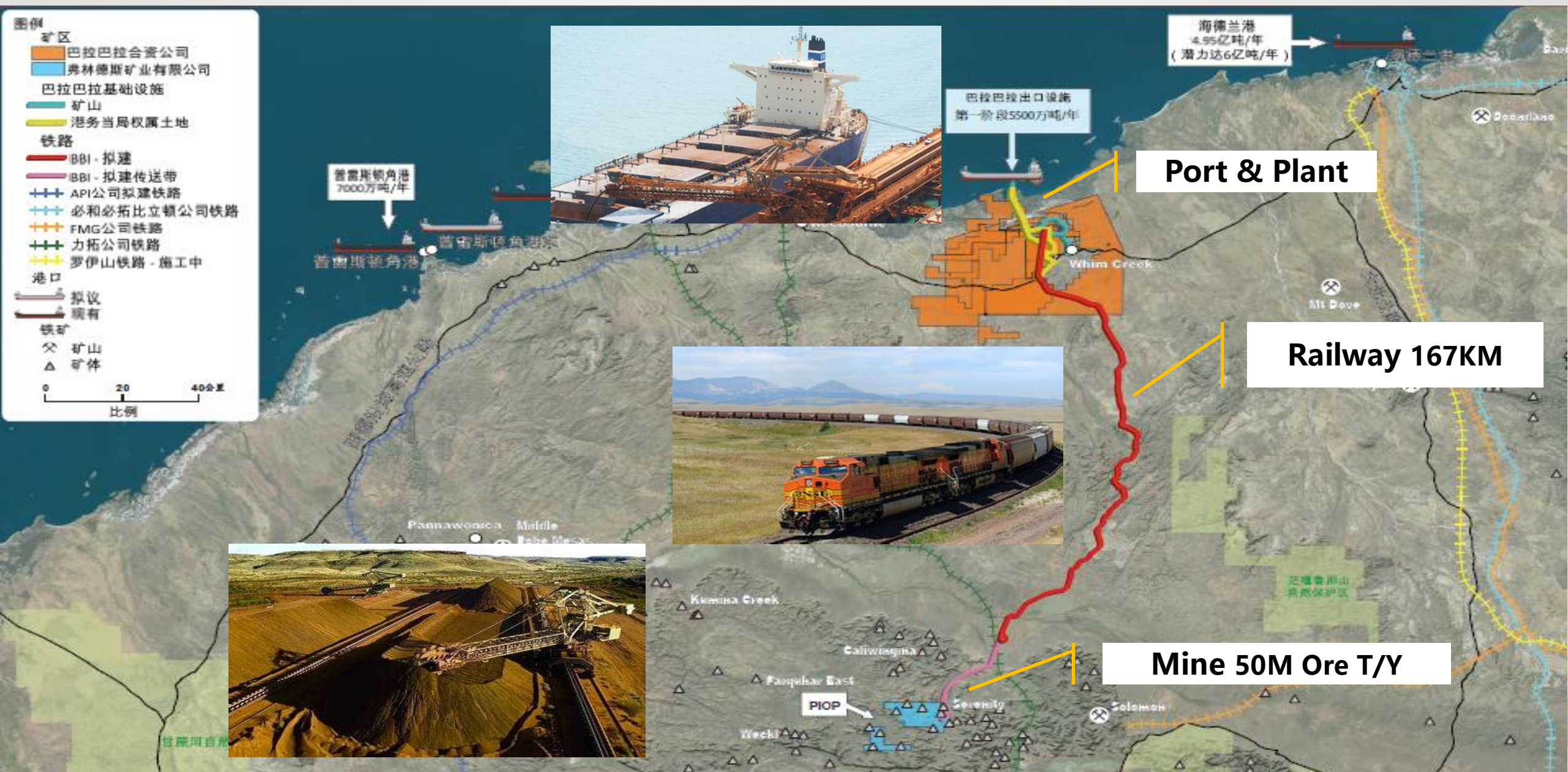
MINING INDUSTRY



中國建築



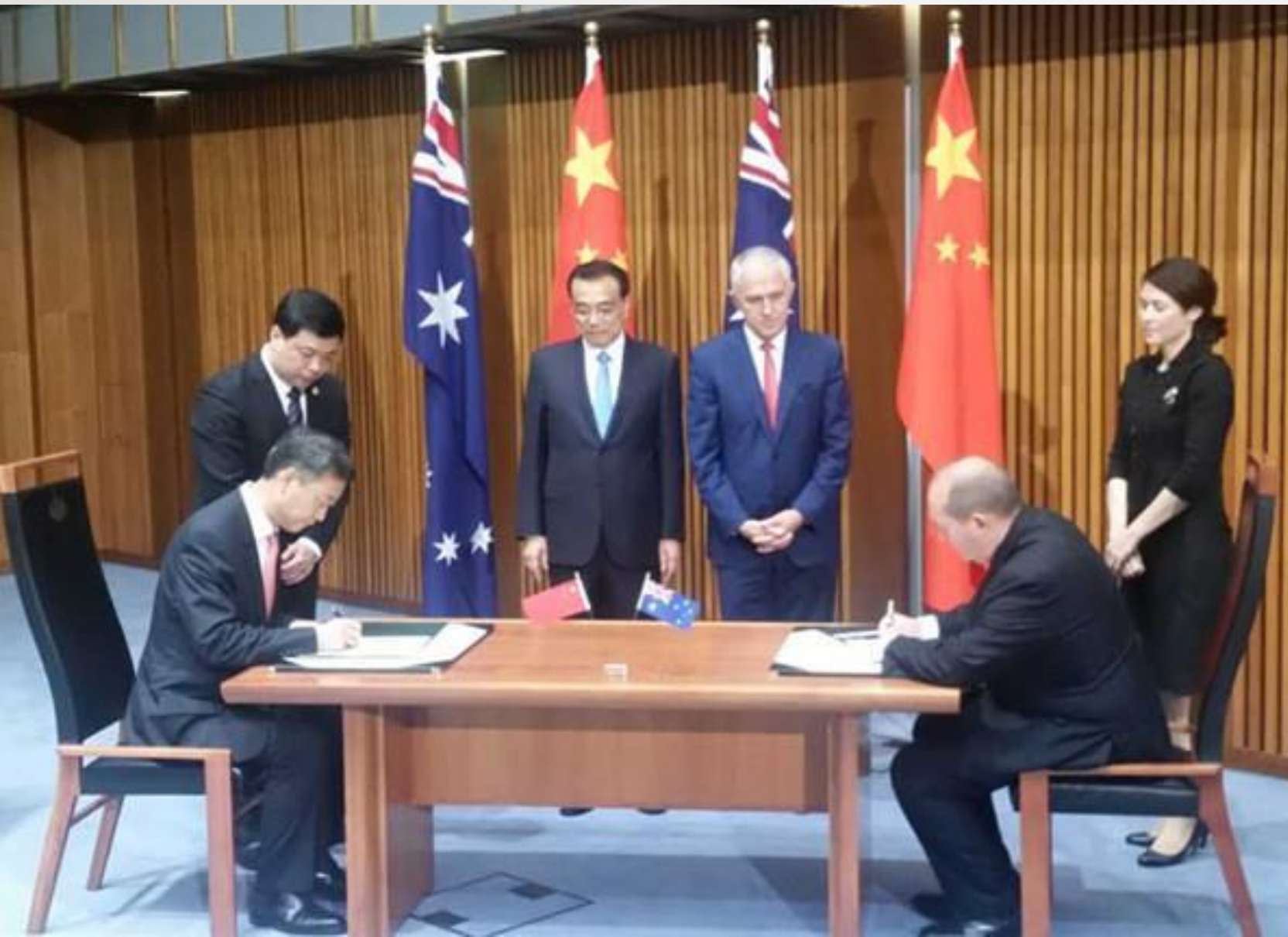
# The Balla Balla Infrastructure In Pilbara, Australia





## A 3.75 Billion USD Project

Chinese Premier and Australian PM Witness the Signing of the GC Framework Agreement



PART

15

# 石油、化工和电力 PETROCHEMICAL & POWER GENERATION



中國建築



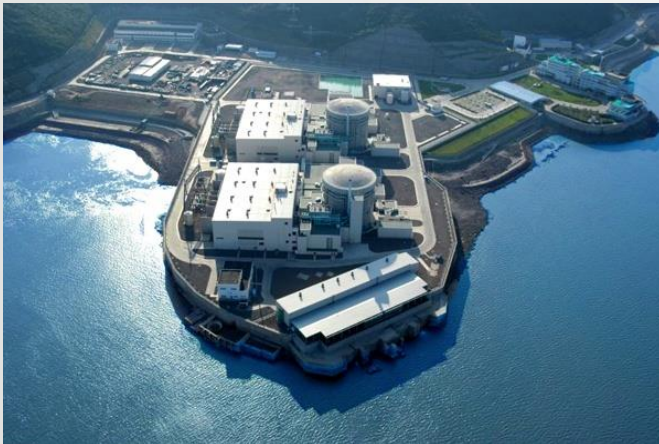
## 大庆油田

Daqing Oilfield , Heilongjiang, China



## 辽宁营口原油储藏项目

Crude Oil Storage Tank Farm of Yingkou Port , China



## 大亚湾核电项目

Daya Bay Nuclear Power Plant  
Shenzhen, China

## 阿尔及利亚斯基克达凝析油项目

Sikikeda Refinery . Algeria



## Bali Island Power Plant in Indonesia

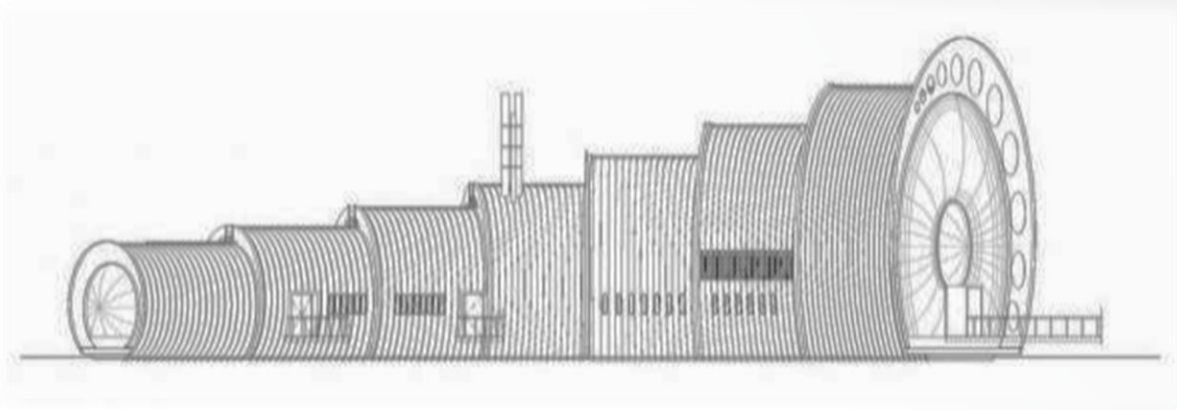
巴厘岛电站



PART

16

# 水务 环境工程 和综合管廊 WATER / SEWERAGE / UTILITY TUNNEL



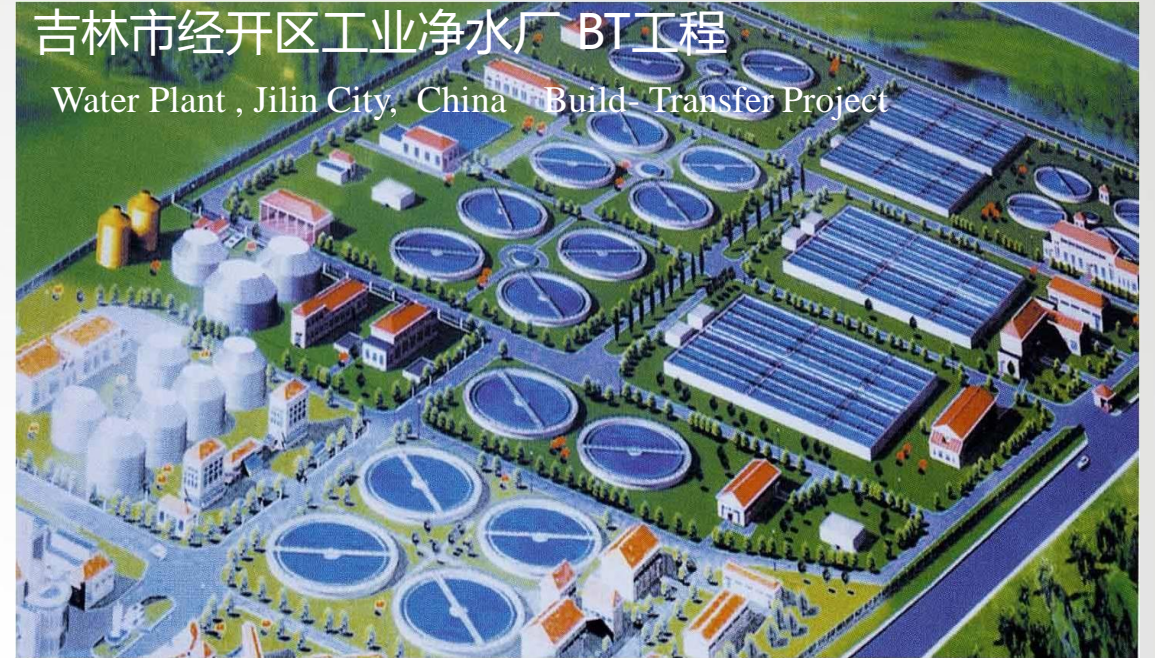
中國建築



**苏州相城区水厂 Suzhou Xiangchen Water Plant**



**吉林市经开区工业净水厂 BT工程**  
Water Plant , Jilin City, China Build-Transfer Project



**博茨瓦纳加布罗内污水处理厂**  
Sewage Treatment Works, Gaborone, Botswana



**哈萨克斯坦 卡尔甘达努拉河污染土处理工程**  
Soil Treatment Works, Karganda , Kazakhstan



PART

17

国际 合作

INTERNATIONAL COOPERATION



中國建築



## Corporation Partnership

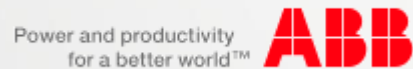
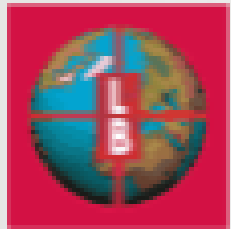


## Financial Cooperation





## International Supply Chain



PART

18

马来西亚公司业绩  
PROJECT REFERENCE  
UNDER MALAYSIA  
BRANCH



中國建築





**QUALITY ASSURANCE . VALUE CREATION**

**中国建筑马来西亚有限公司**

**CHINA STATE CONSTRUCTION ENGINEERING(M) SDN BHD**

PART

1

# 公司简介

## GENERAL INTRODUCTION



中國建築





100%



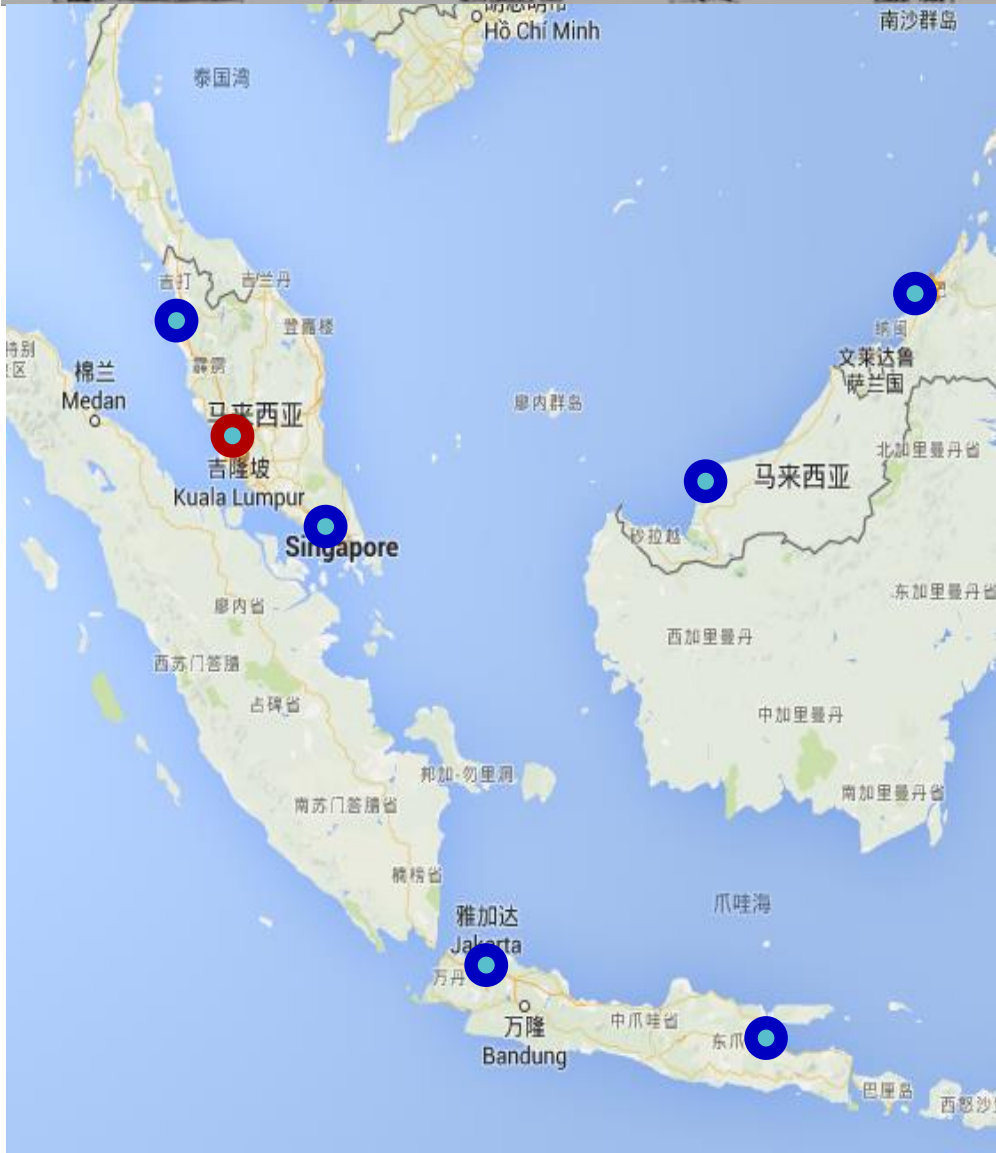
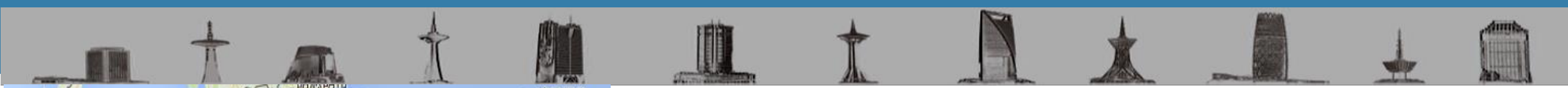
Market



Malaysia



Indonesia



# 中国建筑马来西亚有限公司

CHINA STATE CONSTRUCTION ENGINEERING (M) SDN. BHD.  
(1060634-X)

**Kuala Lumpur Office (HQ):**  
**Suite A-13A-1, Level 13A, Hampshire Place,**  
**Jalan Mayang Sari, 50450 Kuala Lumpur**  
**Tel: +603 2714 2089 Fax: +603 2714 2079**

**Johor Bahru Office:**  
**Lot 0425, 4th Floor, Wisma SP Setia,**  
**No. 15, Jalan Indah, 81200 Johor**  
**Tel: +607 239 5236 Fax: +607 239 5217**

**East Malaysia Office:**  
**7<sup>th</sup> Floor, No. L-69-7, Block L, KK Time Square,**  
**Signature Office, 88100 Kota Kinabalu, Sabah**

**Jakarta Office:**  
**Menara Imperium 25/F Jl.H.R. Rasuna Said, Kav 1, Jakarta, Indonesia**







# 中国建筑马来西亚有限公司

CHINA STATE CONSTRUCTION ENGINEERING (M) SDN. BHD.  
(1060634-X)



**Kuala Lumpur Office:**  
**Suite A-13A, Level 13A, Hampshire Place,**  
**Jalan Mayang Sari, 50450 Kuala Lumpur.**  
**Tel: +603 2714 2089**  
**Fax: +603 2714 2079**

**吉隆坡办公室:**  
**地址: Suite A-13A, Level 13A, Hampshire Place,**  
**Jalan Mayang Sari, 50450 Kuala Lumpur**  
**电话: +603 2714 2089**  
**传真: +603 2714 2079**



# 中国建筑马来西亚有限公司

CHINA STATE CONSTRUCTION ENGINEERING (M) SDN. BHD.  
(1060634-X)



**Johor Bahru Office:**  
Lot 0425, 4th Floor,  
Wisma SP Setia,  
No. 15, Jalan Indah, 81200  
Johor

Tel: +607 239 5236  
Fax: +607 239 5217



**Kota Kinabalu Office:**  
7th Floor, No. L-69-7, Block L,  
KK Times Square, 88100 KK, Sabah

Tel: +608 8276 672  
Fax: +608 8275 765



**Jakarta Office:**  
Menara Imperium 25/F Jl.H.R. Rasuna Said,  
Kav 1, Jakarta, Indonesia





## China State Construction Engineering (M) S/B:

- Incorporated in Malaysia under Company act 1965 on Sep 3rd, 2013.  
2013年9月3日，中国建筑马来西亚有限公司成立。
- Wholly owned and authorized as the entity to operate in Malaysia by parent company-CSCEC.  
中国建筑马来西亚有限公司为母公司（中建股份）全资拥有的在马经营机构
- Total management staff are over 600.  
公司管理、专业人员已经达到600人并持续增长。
- Been awarded over 20 projects with total contract value over 10 billion ringgit.  
Many signature towers are constructed in different cities such as Jakarta, Kuala Lumpur, JB, KK etc.  
自成立来，总合同额累计约103亿马币，已承接了超过20个项目。在雅加达和马来西亚各大城市均承建了当地的地标建筑。

SSM  
SURUHANJAYA SYARIKAT MALAYSIA  
COMPANIES COMMISSION OF MALAYSIA

BORANG 9  
AKTA SYARIKAT 1965 [Seksyen 16(4)]

No. Syarikat - MyCoID  
1060634 X

CERTIFIED TRUE COPY  
LIM KOON LIE  
(LS 005789)  
COMPANY SECRETARY

**PERAKUAN PEMERBADANAN SYARIKAT SENDIRIAN**

Dengan ini diprakui bahawa

**CHINA STATE CONSTRUCTION ENGINEERING (M) SDN. BHD.**

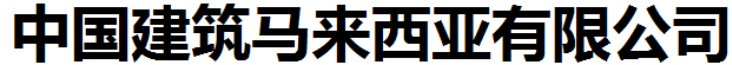
telah diperbadankan di bawah Akta Syarikat 1965, pada dan mulai dari 03 haribulan September 2013, dan bahawa syarikat ini adalah sebuah syarikat berhad menurut syer dan bahawa syarikat ini adalah sebuah syarikat sendirian.

Dibuat di bawah tandatangan dan meterai saya di Kuala Lumpur pada 03 haribulan September 2013.

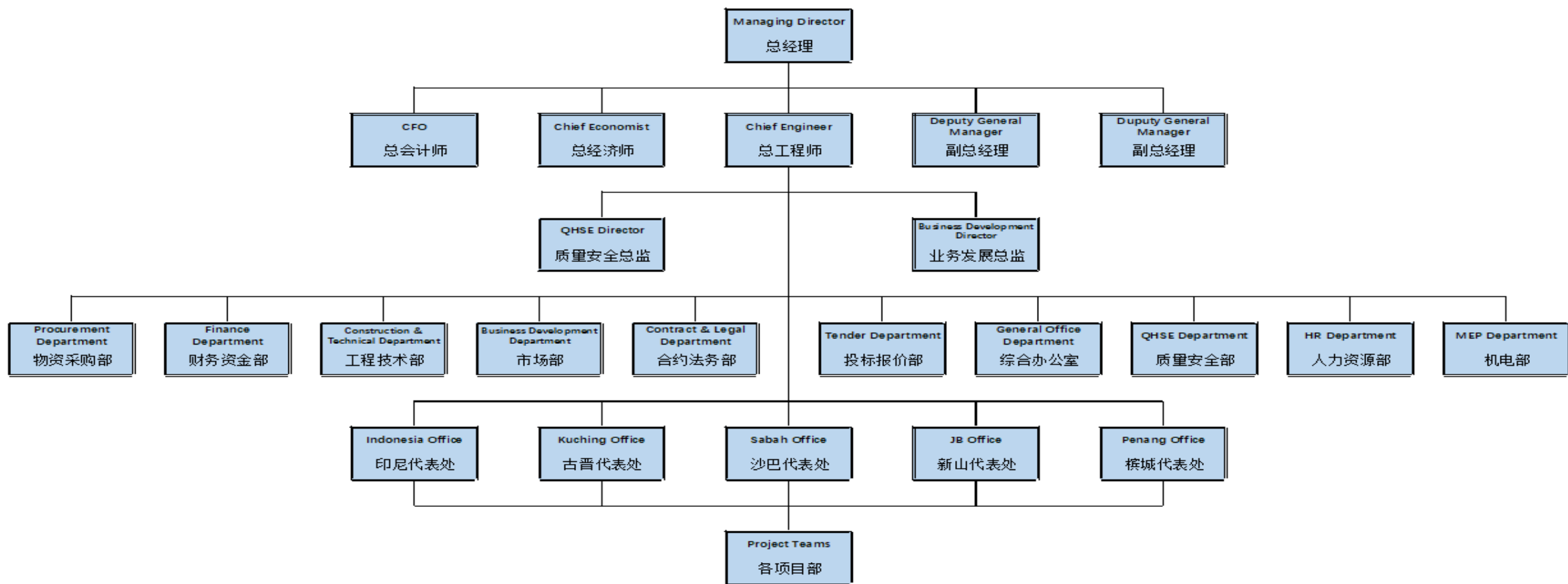
MOHD NAIM DARUWISH  
PENDAFTAR SYARIKAT  
MALAYSIA

UserID : shahbah Date : 05/09/2013 11:02:06 AM

NO. SERI: SSM 5478776



## Organization Chart:

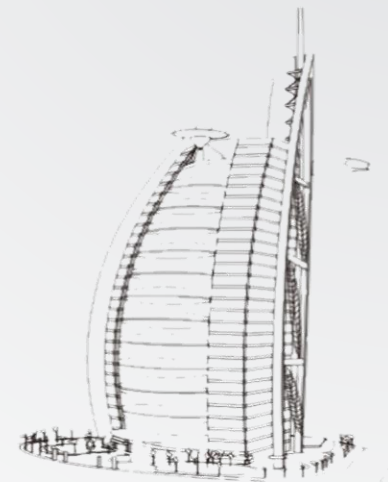




PART 2

项目介绍

PROJECT REFERENCE



中國建築

# 马来西亚部分

## ---MALAYSIA



**Project Name:** Lakeville Residence (Phase 2)  
(Kuala Lumpur)

**Client:** Enchanting heights Sdn. Bhd (Mah Sing Group)

**GFA:** 280,000 m<sup>2</sup>

**Contract Period:** 15/12/2015-15/03/2019

**Description:** 2 blocks 38-storeys service apartment;  
2 blocks 42-storeys service apartment; 1 block 35-  
storeys affordable apartment.





# 1、Lakeville Residence(Phase 2)

## On-going Projects



**PROGRESS**  
**30/06/2018:**

**Block G – level 18**  
**Block E & F – Structure Completed**  
**Block D & C – Structure Completed**



**12th MOSHPA OSH Excellence Award 2016-Gold Award for QSH Management in Construction to Lakeville Project**



**13th MOSHPA OSH Excellence Award 2017 for OSHE Management in High Rise Civil Construction to Lakeville Project**



# 1、Lakeville Residence(Phase 2)

## On-going Projects

3. Overall evaluation of construction management	1 2 3 4 5 6 7 8 9 10	1 2 3 4 5 6 7 8 9 10	1 2 3 4 5 6 7 8 9 10
3.1 Staff attitude	1 2 3 4 5 6 7 8 9 10	1 2 3 4 5 6 7 8 9 10	1 2 3 4 5 6 7 8 9 10
3.2 Timeliness and effectiveness of communication	1 2 3 4 5 6 7 8 9 10	1 2 3 4 5 6 7 8 9 10	1 2 3 4 5 6 7 8 9 10
3.3 Project manager comprehensive ability	1 2 3 4 5 6 7 8 9 10	1 2 3 4 5 6 7 8 9 10	1 2 3 4 5 6 7 8 9 10
3.4 Staff level of business	1 2 3 4 5 6 7 8 9 10	1 2 3 4 5 6 7 8 9 10	1 2 3 4 5 6 7 8 9 10
3.5 Material support capacity	1 2 3 4 5 6 7 8 9 10	1 2 3 4 5 6 7 8 9 10	1 2 3 4 5 6 7 8 9 10
3.6 Construction plan organization	1 2 3 4 5 6 7 8 9 10	1 2 3 4 5 6 7 8 9 10	1 2 3 4 5 6 7 8 9 10
3.7 Project quality control	1 2 3 4 5 6 7 8 9 10	1 2 3 4 5 6 7 8 9 10	1 2 3 4 5 6 7 8 9 10
3.8 Safe and civilized construction	1 2 3 4 5 6 7 8 9 10	1 2 3 4 5 6 7 8 9 10	1 2 3 4 5 6 7 8 9 10
3.9 Subcontracting team management	1 2 3 4 5 6 7 8 9 10	1 2 3 4 5 6 7 8 9 10	1 2 3 4 5 6 7 8 9 10
3.10 Project schedule control	1 2 3 4 5 6 7 8 9 10	1 2 3 4 5 6 7 8 9 10	1 2 3 4 5 6 7 8 9 10
3.11 Engineering data management	1 2 3 4 5 6 7 8 9 10	1 2 3 4 5 6 7 8 9 10	1 2 3 4 5 6 7 8 9 10
3.12 safety, quality self-examination	1 2 3 4 5 6 7 8 9 10	1 2 3 4 5 6 7 8 9 10	1 2 3 4 5 6 7 8 9 10

4. All aspects of service	1 2 3 4 5 6 7 8 9 10	1 2 3 4 5 6 7 8 9 10	1 2 3 4 5 6 7 8 9 10
4.1 Correct understanding of the design	1 2 3 4 5 6 7 8 9 10	1 2 3 4 5 6 7 8 9 10	1 2 3 4 5 6 7 8 9 10
4.2 Rationalization in the construction process	1 2 3 4 5 6 7 8 9 10	1 2 3 4 5 6 7 8 9 10	1 2 3 4 5 6 7 8 9 10
4.3 To assist in the relevant procedures	1 2 3 4 5 6 7 8 9 10	1 2 3 4 5 6 7 8 9 10	1 2 3 4 5 6 7 8 9 10
4.4 Communication and cooperation with the supervision	1 2 3 4 5 6 7 8 9 10	1 2 3 4 5 6 7 8 9 10	1 2 3 4 5 6 7 8 9 10
4.5 The treatment results of the disagreement	1 2 3 4 5 6 7 8 9 10	1 2 3 4 5 6 7 8 9 10	1 2 3 4 5 6 7 8 9 10
4.6 Implementation of supervision notice	1 2 3 4 5 6 7 8 9 10	1 2 3 4 5 6 7 8 9 10	1 2 3 4 5 6 7 8 9 10

Sheet 2: Evaluation in details

Evaluation Items	CCEED		
1. Comprehensive evaluation of overall construction quality	1 2 3 4 5 6 7 8 9 10	1 2 3 4 5 6 7 8 9 10	1 2 3 4 5 6 7 8 9 10
1, project quality evaluation (housing construction)	Please answer 1.1-1.7 questions if the project is house construction	Please answer 1.1-1.7 questions if the project is house construction	Please answer 1.1-1.7 questions if the project is house construction
1.1 Foundation quality	1 2 3 4 5 6 7 8 9 10	1 2 3 4 5 6 7 8 9 10	1 2 3 4 5 6 7 8 9 10
1.2 The quality of the main structure	1 2 3 4 5 6 7 8 9 10	1 2 3 4 5 6 7 8 9 10	1 2 3 4 5 6 7 8 9 10
1.3 Decoration quality	1 2 3 4 5 6 7 8 9 10	1 2 3 4 5 6 7 8 9 10	1 2 3 4 5 6 7 8 9 10
1.4 Installation of project quality	1 2 3 4 5 6 7 8 9 10	1 2 3 4 5 6 7 8 9 10	1 2 3 4 5 6 7 8 9 10
1.5 Roofing project quality	1 2 3 4 5 6 7 8 9 10	1 2 3 4 5 6 7 8 9 10	1 2 3 4 5 6 7 8 9 10
1.6 Waterproof engineering quality	1 2 3 4 5 6 7 8 9 10	1 2 3 4 5 6 7 8 9 10	1 2 3 4 5 6 7 8 9 10
1.7 Water and electricity engineering	1 2 3 4 5 6 7 8 9 10	1 2 3 4 5 6 7 8 9 10	1 2 3 4 5 6 7 8 9 10

### VI. Profile of interviewee

1、Your position ( ) Senior Project Manager.

(1) Party A Project Leader (2) Party A staff (3) Supervisor

2、Which year did your project complete? If not, please select (2).

(1) In 2016 (2) Under construction

Your project Location: Lakeville Residence Phase 2

Your name: Jon's Tan Tien Shen

Tel: 0188703551

Enchanting Heights Sdn Bhd  
Company seal

The customer satisfaction survey towards Lakeville 2 project which done by Enchanting Heights Sdn Bhd (The Client) in June 2017 is showing the average score of **8.83** on comprehensive evaluation of overall construction performance.





**Project Name:** 9 Seputeh Residence  
(Kuala Lumpur)

**Client:** MRCB Builders Sdn Bhd

**GFA:** 340,000 m2

**Contract period:** 15/11/2015-14/08/2018

**Description:** 2 storeys basement, 8 storeys elevated carpark, Tower A-36 storeys, Tower B 34 storeys, Tower C-36 storeys, Tower D-34 storeys, SOHO-12 storeys.





**PROGRESS (25/06/2018):**  
Block A – Level 41  
Block B – Level 39  
Block C & D – Structure completed  
SOHO – Structure Completed



**Project Name:** Media City (Kuala Lumpur)

**Client:** DRB-Hicom Berhad

**GFA:** 71000m<sup>2</sup>

**Contract Period:** 2016/12/12-2019/07/11

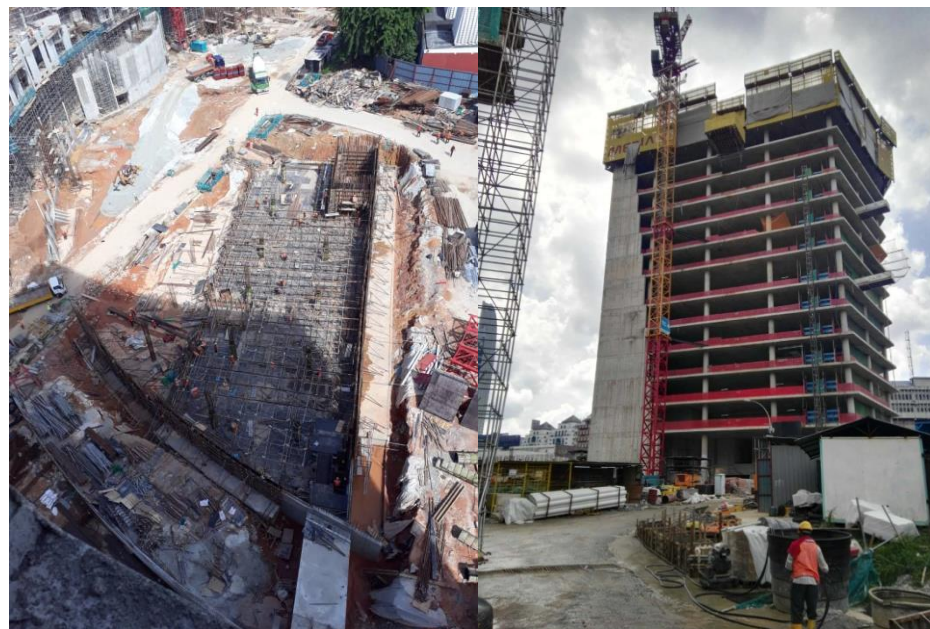
**Description:** Block A: 18-storeys Office, 3-storeys-TV studio, 2-storeys music studio, 5-storeys auditorium, 2-storeys parking building.  
Block B: 1-storey garage, 1-storey recreation Centre.  
Block C: 2-storeys parking building





### 3、Media City

### On-going Projects



#### PROGRESS (26/06/2018):

##### Zone A

A1 – Level 14

A2 – 85%

A3 – 80%

A4 – 95%

##### Zone B

SSU completed

Recreation center RC wall  
completed

Zone C: 95%



## 4、Forest City Plot 26

## On-going Projects

**Project Name:** Forest City Plot 26  
Phase 2 (Johor)

**Client:** Country Garden Co. Ltd

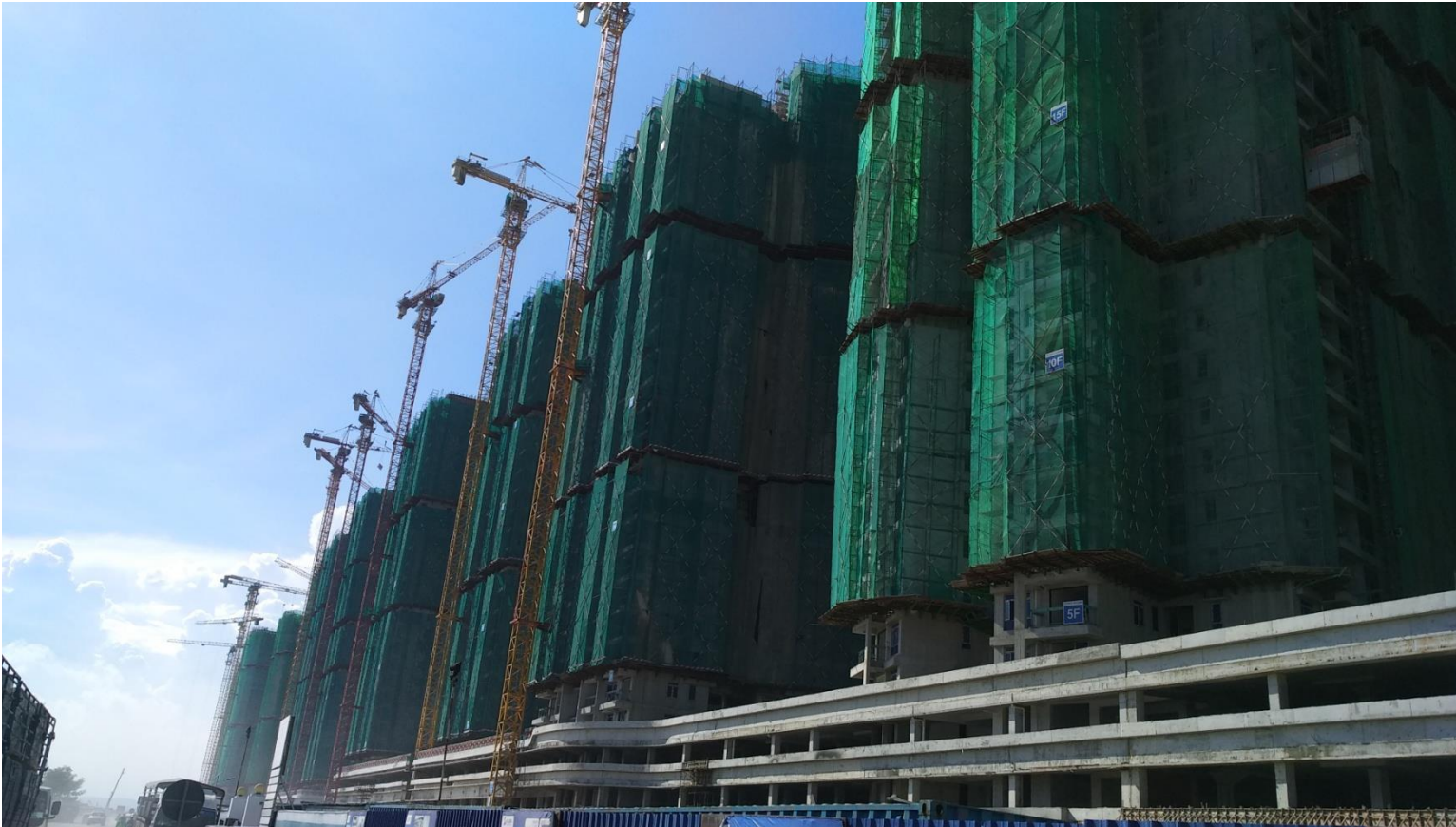
**Contract Period:** 2017/01/30-2018/10/30

**GFA:** 149,000 m<sup>2</sup>

**Description:** 6 blocks in total, Tower A3-34 storeys, Tower B2/B4/B6- 29 storeys, Tower C1/C3-29 storeys. Podium Tower A/B- 3 storeys, Tower C-2 storeys.







### **PROGRESS (27/06/2018):**

**Block A3 – Level 33**

**Block B2 – Structure Completed**

**Block B4 – Structure Completed**

**Block B6 – Structure Completed**

**Block C1 – Structure Completed**

**Block C3 – Structure Completed**





### The Park 2

**Client:** Pavilion Group

**Contract Period:** 2017/10/01-2020/12/01

**GFA:** 183,000 m2

**Description:** Tower 1-39 storeys, Tower 2-41 storeys.





**PROGRESS (30/06/2018):**  
Overall until Level 2





### The Era

**Client:** JKG Central Park Sdn Bhd

**Contract Period:** 2017/10/15-2020/06/14

**GFA:** 200,000 m2

**Description:** Tower 1-53 storeys, Tower 2-55 storeys. Podium Tower-8 storeys.





**PROGRESS (30/06/2018):**

**LG Floor- 95%**

**LGM Floor- 80%**

**GF Floor- 65%**

**L1 Floor- 5%**



### Landmark Phase 1 Tower

**Client:** Country Garden Pacificview Sdn Bhd

**Contract Period:** 2017/10/15-2020/07/01  
**GFA:** 187,067 m2

**Description:** 1 block 45-storeys office tower, 5-storeys podium.





## 7、Landmark Phase 1 Tower

## On-going Projects



**PROGRESS (04/06/2018):**

Zone A – 30%

Zone B – Structure Completed

Zone C – 95%







### SHERATON HOTEL IN KUCHING

**Client:** Double Dynasty Holdings Sdn Bhd

**Contract Period:** 2018/01/02-2020/01/01

**GFA:** 25,000 m2

**Description:** 1 block 22-storeys hotel tower, 2-storeys basement.



## 8、Sheraton Hotel in Kuching

## On-going Projects





# 9、 Sabah Railway Upgrade: Tenom to Haloglat

## On-going Projects

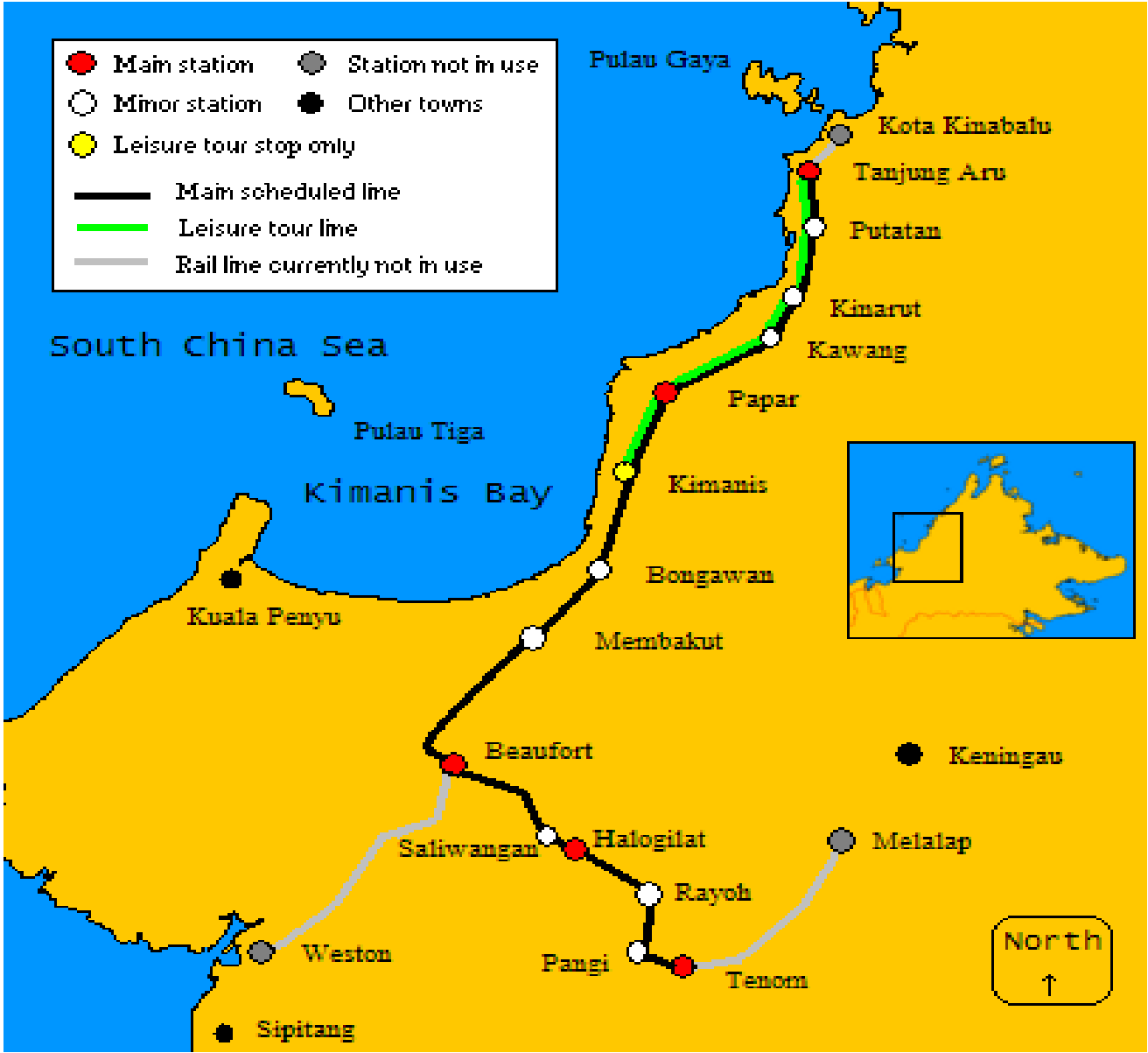
Sabah Railway Upgrade : Tenom to Haloglat

Client: Minister of Transport Malaysia

Contract Period: 2017/11/22-2019/09/20

Length: 22 KM

### Sabah State Railway Network





# 10、Jesselton Twin Towers

## On-going Projects

**Jesselton Twin Towers(Design + Build)**

**Client:** Jesselton Properties Sdn. Bhd.

**Contract Period:** 2017/11/01-2022/02/28

**GFA:** 200,000 m2

**Description:** 2 blocks 50-storeys residential tower, 3-storeys commercial lots, 2 lower ground car park, 8-storeys parking podium, sky gardens(2-storeys+roof top).





# 11、Likas Boulevard

## On-going Projects

### Likas Boulevard

**Client:** GE Properties Sdn. Bhd.

**Contract Period:** 2018/11/16-2022/05/19

**GFA:** 220,000 m2

**Description:** 16-storeys hotel, 21-storeys shop/office, 8-storeys podium consists of boutique hotel, banquet, basement carpark, lower ground shop.





# 12、Rencana Royale

## On-going Projects

### Rencana Royale

**Client:** Minda Muhibah Sdn. Bhd.

**Contract Period:** 2018/12/01-2020/06/30

**GFA:** 63127 m2

**Description:** 4 basement carpark, corporate office, 9-storeys of office suites, garden terrace, 2-storeys of facilities and shops.





### Glass Manufacturing Plant

**Client:** ADM Design & Management Sdn. Bhd.

**Contract Period:** 18 months from the date of commencement.

**GFA:** 100000 m<sup>2</sup>


**Description:** 3-storeys office, 1 electric sub-station, gas station, generator station, water recycle system, 1 glass manufacturing factory, packing factory.





# 14、Signature Tower

## Completed Projects



**Project Name:** Signature Tower  
(Tun Razak Exchange 106)  
**Client:** Mulia Property Development Sdn.Bhd.  
**GFA:** 380,000 m2  
**Contract period:** 15/02/2016-14/12/2018  
**Description:** Super high-rise building,  
7 storeys basement, 93 storeys super structure.

**Skyscraper:** 453m

**The tallest building in overseas  
constructed by Chinese companies.**

中国企业在海外承建的最高建筑。



# 14、Signature Tower

## Completed Projects



### PROGRESS (30/06/2018):

- Overall Tower Topping Out



### Highlights:

**1. 19000m<sup>3</sup> concrete pouring in one time, creating new record in Malaysia.**

基础大底板浇筑**19000m<sup>3</sup>**，创造马来西亚建筑史上单次浇筑量记录。

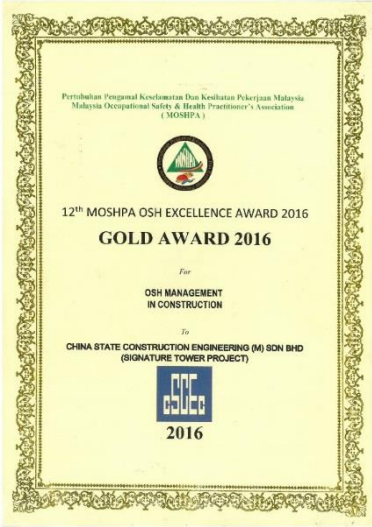
**2. Average construction speed is 3 days per floor, break the fastest record of super high rise building construction in Malaysia.**

平均建设速度**3天**一层，打破马来西亚超高层建设速度的记录。



# 14、Signature Tower

# Completed Projects



12<sup>th</sup> MOSHPA OSH Excellence Award 2016-  
Gold Award for QSH Management in  
Construction to Signature Tower

Sheet 2: Evaluation in details

Evaluation Items	CCEED		
1. Comprehensive evaluation of overall construction quality	1 2 3 4 5 6 7 8 9 10	1 2 3 4 5 6 7 8 9 10	1 2 3 4 5 6 7 8 9 10
1, project quality evaluation (housing construction)	Please answer 1.1-1.7 questions if the project is house construction	Please answer 1.1-1.7 questions if the project is house construction	Please answer 1.1-1.7 questions if the project is house construction
1.1 Foundation quality	1 2 3 4 5 6 7 8 9 10	1 2 3 4 5 6 7 8 9 10	1 2 3 4 5 6 7 8 9 10
1.2 The quality of the main structure	1 2 3 4 5 6 7 8 9 10	1 2 3 4 5 6 7 8 9 10	1 2 3 4 5 6 7 8 9 10
1.3 Decoration quality	1 2 3 4 5 6 7 8 9 10	1 2 3 4 5 6 7 8 9 10	1 2 3 4 5 6 7 8 9 10
1.4 Installation of project quality	1 2 3 4 5 6 7 8 9 10	1 2 3 4 5 6 7 8 9 10	1 2 3 4 5 6 7 8 9 10
1.5 Roofing project quality	1 2 3 4 5 6 7 8 9 10	1 2 3 4 5 6 7 8 9 10	1 2 3 4 5 6 7 8 9 10
1.6 Waterproof engineering quality	1 2 3 4 5 6 7 8 9 10	1 2 3 4 5 6 7 8 9 10	1 2 3 4 5 6 7 8 9 10
1.7 Water and electricity engineering	1 2 3 4 5 6 7 8 9 10	1 2 3 4 5 6 7 8 9 10	1 2 3 4 5 6 7 8 9 10

3. Overall evaluation of construction management	1 2 3 4 5 6 7 8 9 10	1 2 3 4 5 6 7 8 9 10	1 2 3 4 5 6 7 8 9 10
3.1 Staff attitude	1 2 3 4 5 6 7 8 9 10	1 2 3 4 5 6 7 8 9 10	1 2 3 4 5 6 7 8 9 10
3.2 Timeliness and effectiveness of communication	1 2 3 4 5 6 7 8 9 10	1 2 3 4 5 6 7 8 9 10	1 2 3 4 5 6 7 8 9 10
3.3 Project manager comprehensive ability	1 2 3 4 5 6 7 8 9 10	1 2 3 4 5 6 7 8 9 10	1 2 3 4 5 6 7 8 9 10
3.4 Staff level of business	1 2 3 4 5 6 7 8 9 10	1 2 3 4 5 6 7 8 9 10	1 2 3 4 5 6 7 8 9 10
3.5 Material support capacity	1 2 3 4 5 6 7 8 9 10	1 2 3 4 5 6 7 8 9 10	1 2 3 4 5 6 7 8 9 10
3.6 Construction plan organization	1 2 3 4 5 6 7 8 9 10	1 2 3 4 5 6 7 8 9 10	1 2 3 4 5 6 7 8 9 10
3.7 Project quality control	1 2 3 4 5 6 7 8 9 10	1 2 3 4 5 6 7 8 9 10	1 2 3 4 5 6 7 8 9 10
3.8 Safe and civilized construction management	1 2 3 4 5 6 7 8 9 10	1 2 3 4 5 6 7 8 9 10	1 2 3 4 5 6 7 8 9 10
3.9 Subcontracting team	1 2 3 4 5 6 7 8 9 10	1 2 3 4 5 6 7 8 9 10	1 2 3 4 5 6 7 8 9 10
3.10 Project schedule control	1 2 3 4 5 6 7 8 9 10	1 2 3 4 5 6 7 8 9 10	1 2 3 4 5 6 7 8 9 10
3.11 Engineering data management	1 2 3 4 5 6 7 8 9 10	1 2 3 4 5 6 7 8 9 10	1 2 3 4 5 6 7 8 9 10
3.12 safety, quality self-examination	1 2 3 4 5 6 7 8 9 10	1 2 3 4 5 6 7 8 9 10	1 2 3 4 5 6 7 8 9 10

## VI. Profile of interviewee

- Your position ( 1 )  
(1) Party A Project Leader (2) Party A staff (3) Supervisor
- Which year did your project complete? If not, please select (2).  
(1) In 2016 (2) Under construction

Your project Location: Project Director

Your name: Roland Arthur Suckling

Tel: +60 3 2630 8989

Company seal  
MULIA PROPERTY DEVELOPMENT SDN BHD.  
Company No. 1339949-K

The customer satisfaction survey towards Signature Tower project which done by Mulia Property Development Sdn Bhd (The Client) in June 2017 is showing the average score of 9 on comprehensive evaluation of overall construction performance.

**Project Name:** The Astaka (Johor Bahru)

**Client:** Astaka Padu Sdn Bhd

**GFA:** 170,000 m2

**Contract period:** 05/01/2015-01/09/2018

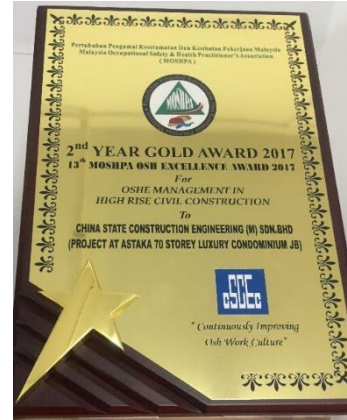
**Description:** 3-storeys basement ,6 storeys podium( 5-storeys elevated carpark and 1 storey mezzanine), Tower A-64 storeys and Tower B-59 storeys.

### Highlights:

- ◆ The highest building in JB(275m)
- ◆ Luxury residence







**13<sup>th</sup> MOSHPA OSH Excellence Award 2017 for OSHE Management in High Rise Civil Construction to Astaka Project**

**12<sup>th</sup> MOSHPA OSH Excellence Award 2016-Gold Award for QSH Management to Astaka Project**



**On 30 April 2017, The Astaka project has made the achievement of 3 million working hours without an accident.**

Sheet 2: Evaluation in details

Evaluation Items	CCEED		
1. Comprehensive evaluation of overall construction quality	1 2 3 4 5 6 7 8 9 10	1 2 3 4 5 6 7 8 9 10	1 2 3 4 5 6 7 8 9 10
1, project quality evaluation (housing construction)	Please answer 1.1-1.7 questions if the project is house construction	Please answer 1.1-1.7 questions if the project is house construction	Please answer 1.1-1.7 questions if the project is house construction
1.1 Foundation quality	1 2 3 4 5 6 7 8 9 10	1 2 3 4 5 6 7 8 9 10	1 2 3 4 5 6 7 8 9 10
1.2 The quality of the main structure	1 2 3 4 5 6 7 8 9 10	1 2 3 4 5 6 7 8 9 10	1 2 3 4 5 6 7 8 9 10
1.3 Decoration quality	1 2 3 4 5 6 7 8 9 10	1 2 3 4 5 6 7 8 9 10	1 2 3 4 5 6 7 8 9 10
1.4 Installation of project quality	1 2 3 4 5 6 7 8 9 10	1 2 3 4 5 6 7 8 9 10	1 2 3 4 5 6 7 8 9 10
1.5 Roofing project quality	1 2 3 4 5 6 7 8 9 10	1 2 3 4 5 6 7 8 9 10	1 2 3 4 5 6 7 8 9 10
1.6 Waterproof engineering quality	1 2 3 4 5 6 7 8 9 10	1 2 3 4 5 6 7 8 9 10	1 2 3 4 5 6 7 8 9 10
1.7 Water and electricity engineering	1 2 3 4 5 6 7 8 9 10	1 2 3 4 5 6 7 8 9 10	1 2 3 4 5 6 7 8 9 10

3. Overall evaluation of construction management	1 2 3 4 5 6 7 8 9 10	1 2 3 4 5 6 7 8 9 10	1 2 3 4 5 6 7 8 9 10
3.1 Staff attitude	1 2 3 4 5 6 7 8 9 10	1 2 3 4 5 6 7 8 9 10	1 2 3 4 5 6 7 8 9 10
3.2 Timeliness and effectiveness of communication	1 2 3 4 5 6 7 8 9 10	1 2 3 4 5 6 7 8 9 10	1 2 3 4 5 6 7 8 9 10
3.3 Project manager comprehensive ability	1 2 3 4 5 6 7 8 9 10	1 2 3 4 5 6 7 8 9 10	1 2 3 4 5 6 7 8 9 10
3.4 Staff level of business	1 2 3 4 5 6 7 8 9 10	1 2 3 4 5 6 7 8 9 10	1 2 3 4 5 6 7 8 9 10
3.5 Material support capacity	1 2 3 4 5 6 7 8 9 10	1 2 3 4 5 6 7 8 9 10	1 2 3 4 5 6 7 8 9 10
3.6 Construction plan organization	1 2 3 4 5 6 7 8 9 10	1 2 3 4 5 6 7 8 9 10	1 2 3 4 5 6 7 8 9 10
3.7 Project quality control	1 2 3 4 5 6 7 8 9 10	1 2 3 4 5 6 7 8 9 10	1 2 3 4 5 6 7 8 9 10
3.8 Safe and civilized construction management	1 2 3 4 5 6 7 8 9 10	1 2 3 4 5 6 7 8 9 10	1 2 3 4 5 6 7 8 9 10
3.9 Subcontracting team	1 2 3 4 5 6 7 8 9 10	1 2 3 4 5 6 7 8 9 10	1 2 3 4 5 6 7 8 9 10
3.10 Project schedule control	1 2 3 4 5 6 7 8 9 10	1 2 3 4 5 6 7 8 9 10	1 2 3 4 5 6 7 8 9 10
3.11 Engineering data management	1 2 3 4 5 6 7 8 9 10	1 2 3 4 5 6 7 8 9 10	1 2 3 4 5 6 7 8 9 10
3.12 safety, quality self-examination	1 2 3 4 5 6 7 8 9 10	1 2 3 4 5 6 7 8 9 10	1 2 3 4 5 6 7 8 9 10

4. All aspects of service	1 2 3 4 5 6 7 8 9 10	1 2 3 4 5 6 7 8 9 10	1 2 3 4 5 6 7 8 9 10
4.1 Correct understanding of the design	1 2 3 4 5 6 7 8 9 10	1 2 3 4 5 6 7 8 9 10	1 2 3 4 5 6 7 8 9 10
4.2 Rationalization in the construction process	1 2 3 4 5 6 7 8 9 10	1 2 3 4 5 6 7 8 9 10	1 2 3 4 5 6 7 8 9 10
4.3 To assist in the relevant procedures	1 2 3 4 5 6 7 8 9 10	1 2 3 4 5 6 7 8 9 10	1 2 3 4 5 6 7 8 9 10
4.4 Communication and cooperation with the supervision	1 2 3 4 5 6 7 8 9 10	1 2 3 4 5 6 7 8 9 10	1 2 3 4 5 6 7 8 9 10
4.5 The treatment results of the disagreement	1 2 3 4 5 6 7 8 9 10	1 2 3 4 5 6 7 8 9 10	1 2 3 4 5 6 7 8 9 10
4.6 Implementation of supervision notice	1 2 3 4 5 6 7 8 9 10	1 2 3 4 5 6 7 8 9 10	1 2 3 4 5 6 7 8 9 10

VI. Profile of interviewee

1、 Your position ( )  
(1) Party A Project Leader (2) Party A staff (3) Supervisor

2、 Which year did your project complete? If not, please select (2).  
(1) In 2016 (2) Under construction

Your project Location: JOHOR BAHRU, MALAYSIA  
Your name: IV. DR. JEFFREY YEE  
Tel: +6012-5286696



The customer satisfaction survey towards the Astaka project which done by Astaka Padu Holding Ltd (The Client) in June 2017 is showing the average score of 8 on comprehensive evaluation of overall construction performance.





**Project Name:** The Meridin @ Medini  
(Johor Bahru)

**Client:** Tropika Istimewa Development Sdn Bhd  
(Mah Sing Group)

**GFA:** 150,000 m<sup>2</sup>

**Contract period:** 15/01/2014-02/04/2017

**Description:** 9-storeys podium, Tower A-30 storeys, Tower B- 27-storeys, Tower C-31 storeys and some other facilities.



**Certificate by  
NIOSH-JKKP  
in Jan,2016**



2016年3月12日 (星期六) | 29

(吉隆坡讯) 马星集团日前为旗下的柔佛The Meridin@Medini美丽苑综合产业计划举办封顶仪式，象征建筑结构完工，并宣布结构获得建筑质量评估指数 (CONQUAS) 超过80分。

**馬星美麗苑封頂 建築結構評估逾80分**

马星集团高级首席营运员詹姆士布鲁尼斯表示，集团一直都很注重住宅品质，不断与各界紧密合作，通过提供最佳体验给顾客，同时提升集团的价值。

“我们有信心，透过与最棒的公司如中国建筑大马有限公司合作，我们的品质能够维持最高标准。” 中国建筑大马有限公司亦非常看重与马星集团的合作关系，并承诺会继续高度关注建筑工程的品质和效率。

The Meridin@Medini是一项综合发展计划，包含服务式酒店公寓与住宅和小型办公单位 (SoVo)。该计划占地约8.19英亩，发展总值高达11亿令吉，预计在2017年6月竣工。

**首阶段获80%认购率**

詹姆士指出，The Meridin@Medini的首阶段产业计划已取得80%认购率。该计划坐落在美丽苑的经济特区内，享有许多优势如税务减免和外资买家不受限制等。连柔佛和新加坡的交通运输将在2019年正式完成，而马星高铁则预计可在2022年运作。新山的交通运输提升后将吸引更多人潮。

另外，马星集团去年与Wyndham酒店集团合作，以后旗下的Ramada品牌建造阿林Meridin套房酒店，预计2018年正式营运。该集团目前在柔佛有多达7个计划。(osk/MT)

www.mahsing.com.my

Calculation for CONQUAS Structural Score for 30% Assessment  
Project : Plot A17 Meridin @ Medini

第一次验收

CONQUAS Score Summary

Assessed Area	No. of Compliances	No. of Check	Percentage(%)	Weightage	Weightage Score	Average Weightage Score
A.FormWork						
C-13-01 (Type B5)	31	35	88.57	15	13.29	13.93
C-13-06 (Type B4)	34	35	97.14		14.57	
B.Rebar						
C-13-01 (Type B5)	70	70	100.00	20	20.00	20
C-13-06 (Type B4)	70	70	100.00		20.00	
C.Finished Concrete						
C-10-02 (Type B4)	21	33	63.64	25	15.91	17.80
C-09-01 (Type B5)	26	33	78.79		19.70	
Sub-Total				60		51.73

TOTAL STRUCTURAL CONQUAS SCORE FOR PROJECT (30% Assessment)

86.22%

Calculation for CONQUAS Structural Score for 70% Assessment  
Project : Plot A17 Meridin @ Medini

第二次验收

CONQUAS Score Summary

Assessed Area	No. of Compliances	No. of Check	Percentage(%)	Weightage	Weightage Score	Average Weightage Score
A.FormWork						
A-31-08 (Type C)	35	35	100.00%	15	15.00	14.36
A-31-09 (Type C)	32	35	91.43%		13.71	
B.Rebar						
A-31-08 (Type C)	69	70	98.57%	20	19.71	19.86
A-31-09 (Type C)	70	70	100.00%		20.00	
C.Finished Concrete						
A-29-08 (Type C)	31	33	93.94%	25	23.48	22.73
A-28-09 (Type C)	29	33	87.88%		21.97	
Sub-Total				60		56.94

TOTAL STRUCTURAL CONQUAS SCORE FOR PROJECT (70% Assessment)

94.90%

Calculation for CONQUAS Structural Score for 50% Assessment (第三次验收)  
Project : Plot A17 Meridin @ Medini

CONQUAS Score Summary

Assessed Area	No. of Compliances	No. of Check	Percentage(%)	Weightage	Weightage Score	Average Weightage Score
A.FormWork						
A-21-08 (Type C)	32	35	91.43%	15	13.71	13.29
A-21-09 (Type C)	30	35	85.71%		12.86	
B.Rebar						
A-21-08 (Type C)	70	70	100.00%	20	20.00	19.86
A-21-09 (Type C)	69	70	98.57%		19.71	
C.Finished Concrete						
A-18-01 (Type C)	26	33	78.79%	25	19.70	20.08
A-15-09 (Type C)	27	33	81.82%		20.45	
Sub-Total				60		53.22

TOTAL STRUCTURAL CONQUAS SCORE FOR PROJECT (50% Assessment)

88.70%





**Project Name:** Maya@Likas (Kota Kinabalu)

**Client:** Tower Paradise Sdn Bhd

**GFA:** 80,000 M2

**Contract period:** 15/12/2015-14/01/2019

**Description:** 2 basement(Carpark), Tower A-26 storeys, Tower B- 21 storeys, Tower C-16 storeys.

## 18、 Bank of China Penang Branch

## Completed Projects



**Project Name:** Bank of China Penang Branch

**Client:** Bank of China

**GFA:** 1370m<sup>2</sup>

**Commencement Date:** 01/08/2016

**Completion Date:** 30/06/2017





**Project Name:** Greenland Sales Office and Restaurant (Johor Bahru)

**Client:** Greenland Danga Bay Sdn Bhd (Greenland Group)

**GFA:** 4000 m<sup>2</sup>

**Commencement Date:** 30/06/2014

**Completion Date:** 30/01/2015

**Description:** 3-storeys sales office and 2-storeys Chinese restaurant.



**Project Name:** Tree Cube

**Client:** Sabah Tshung Tsin Middle school

**GFA:** 3000 m2

**Completion Date:** 30/01/2015





**机电部分**

**---MECHANICAL**

**&**

**ELECTRICAL**

No	Project Name	Location	Developer	Year secured order
1	MAYA @ LIKAS	KOTA KINABALU	TOWER PARADIASE SDN BHD	APR, 2016 CWSP
2	Media City : Angkasapuri RTM	KUALA LUMPUR	MEDIA CITY DEVELOPMENT SDN BHD	DEC, 2016 ACMV
3	FOREST CITY (PLOT 26)	JOHOR BAHRU	COUNTRY GARDEN PACIFICVIEW SDN BHD	JAN, 2017 CWSP, ELEC & ELV
4	FOREST CITY (PLOT 04)	JOHOR BAHRU	COUNTRY GARDEN PACIFICVIEW SDN BHD	MAY, 2017 CWSP, ELEC, FPS & ELV
5	FOREST CITY (INTERNATIONAL SCHOOL)	JOHOR BAHRU	COUNTRY GARDEN PACIFICVIEW SDN BHD	JUL, 2017 M&E Works
6	FOREST CITY (LANDMARK)	JOHOR BAHRU	COUNTRY GARDEN PACIFICVIEW SDN BHD	OCT, 2017 ACMV, ELEC & CWSP
7	THE ERA PARK	KUALA LUMPUR	JKG CENTRAL PARK SDN BHD	NOV,2017 CWSP
8	SHERATON HOTEL	KUCHING	PERMUTE BUMIMAS SDN BHD	JAN, 2018 ACMV
9	JESSELTON TWIN TOWER	KOTA KINABALU	JESSELTON PROPERTIES SDN BHD	NOV, 2018 ACMV, FPS, CWSP, S.POOL, ELEC & ELV



YEARS	M&E CONTRACT VALUE (RM)
2018	RM88,311,000.00
2017	RM166,437,783.00
2016	RM26,600,000.00
SUM	RM281,348,783.00



**印度尼西亚部分**

**--- INDONESIA**



# 1、Indonesia 1 Twin Tower

## On-going Projects



**Project Name:** Indonesia 1 Twin Tower(Jakarta)

**Client:** PT China Sonangol Media Investment

**Height:** 301m

**GFA:** 300,000 M2

**Contract Start:**01/07/2016-31/01/2020

**Description:** Tower A-59 storeys, Tower B-58 storeys,23m deep basement,303m above ground.



# 1、Indonesia 1 Twin Tower

## On-going Projects



**PROGRESS (17/05/2018):**  
B6 to B4 core wall completed  
B7 – slab casting completed  
Overall completed 12.88%





## 2、 Lana Apartment& Satoria Tower

## New Projects



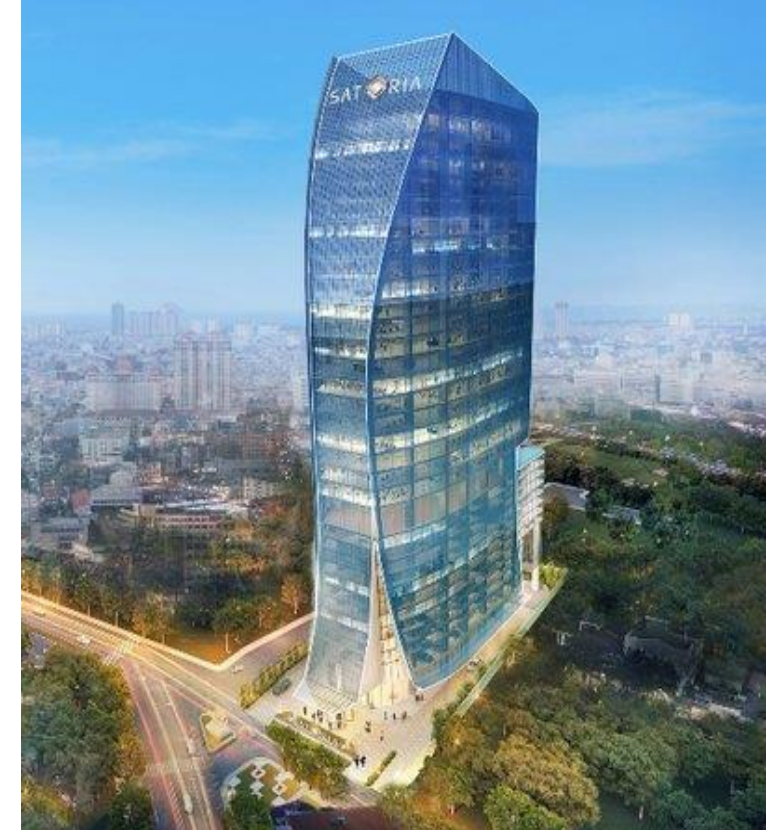
**Project Name:** Lana Apartment(Jakarta)

**Client:** PT. Brewin Mesa Sutera

**GFA:** 94,000 M2

**Contract Period:**30/06/2018-29/07/2019

**Description: Height:** 2 Blocks 38 storeys twin tower



**Project Name:** Satoria Tower (Surabaya)

**Client:** PT Mitra Agung Surabaya

**GFA:** 55,000 M2

**Contract Period:**02/01/2018-01/01/2020

**Description: Height:** 1 Block 36 storeys office Building



**中國建築股份有限公司**

CHINA STATE CONSTRUCTION ENGRG . CORP. LTD

**THANK YOU!**



**中国建筑马来西亚有限公司**

CHINA STATE CONSTRUCTION ENGINEERING (M) SDN. BHD.  
(1060634-X)

**Suite A-13A-1, Level 13A, Hampshire Place,  
Jalan Mayang Sari, 50450 Kuala Lumpur**

**Tel: +603 2714 2089 Fax: +603 2714 2079**

**Email: [cscec.malaysia@gmail.com](mailto:cscec.malaysia@gmail.com)**